

Sustainability Development Goals (SDGs)

Anchor SDGs in your business architecture with Enterprise
Architecture Management based on Enterprise Architect





Peter Lieber

- Parallel Entrepreneur
 - Sparx Systems Central Europe
 - Sparx Services Central Europe
 - LieberLieber Software
- President Österreichischer Gewerbeverein/Austrian Association of Entrepreneurs (www.gewerbeverein.at)
- President Verband Österreichischer Software Industrie/Austrian Association of Software Industry (www.voesi.or.at)
 - Head of Special Interest Group: Enterprise Architecture Management (EAM)



Modeling assists in all
challenges of daily business

Innovation needs models

Peter Lieber



Challenges

- Digitization, service excellence, regulation, the renewal of the IT landscape and the empowerment of employees are among the most important issues for many companies
- Strategies should be developed and implemented quickly, and a high level of customer satisfaction should be achieved.

It is all about standards

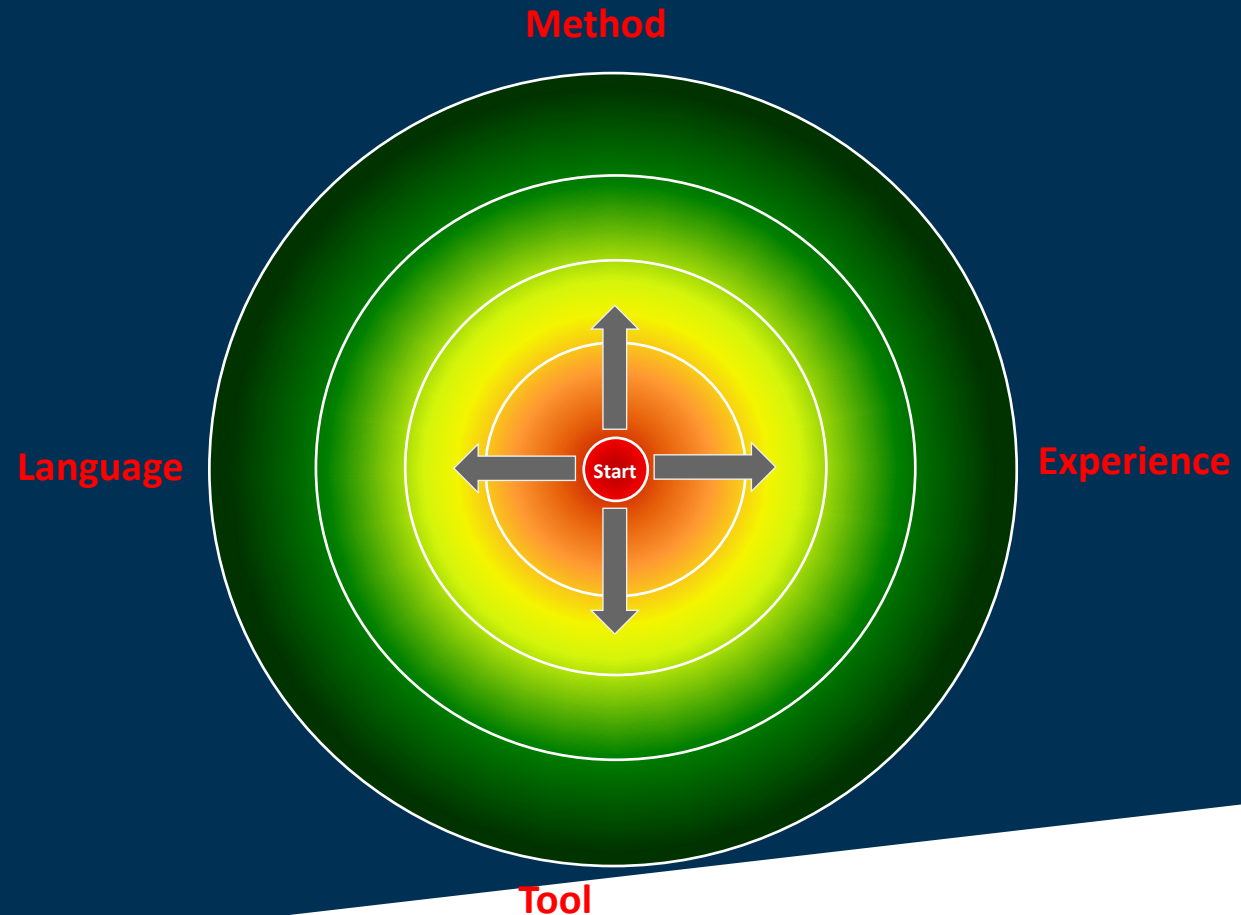
- Smart Grid (IEC TC57, CIM)
- E-Health (EHR,CDA,BRIDG, ISO 215)
- Geospatial (ISO/TC 211, CEN/TC 287, OGC)
- Retail (ARTS UnifiedPOS)
- Government (eDAIS)
- Automotive (AUTOSAR)
- Intelligent Transport Systems (DATEX II)
- Social Security (Medicaid InformationTechnology Architecture – MITA)
- E-Commerce (OASIS Unified Business Language)
- Geology (GeoSciML, SoilML, WaterML)
- Biodiversity (European Distributed Institute of Taxonomy)
- Rail Transport (TRAX)
- EDI (ASC X12)
- Financial Services Messaging (SWIFT/SEPA)
- Ports (EFFORTS)
- Telecommunications (eTOM, eTAM, SID)
- Object Management Group (UML, XMI, DDS, MPMN, UPDM etc)
- NIEM
- ...



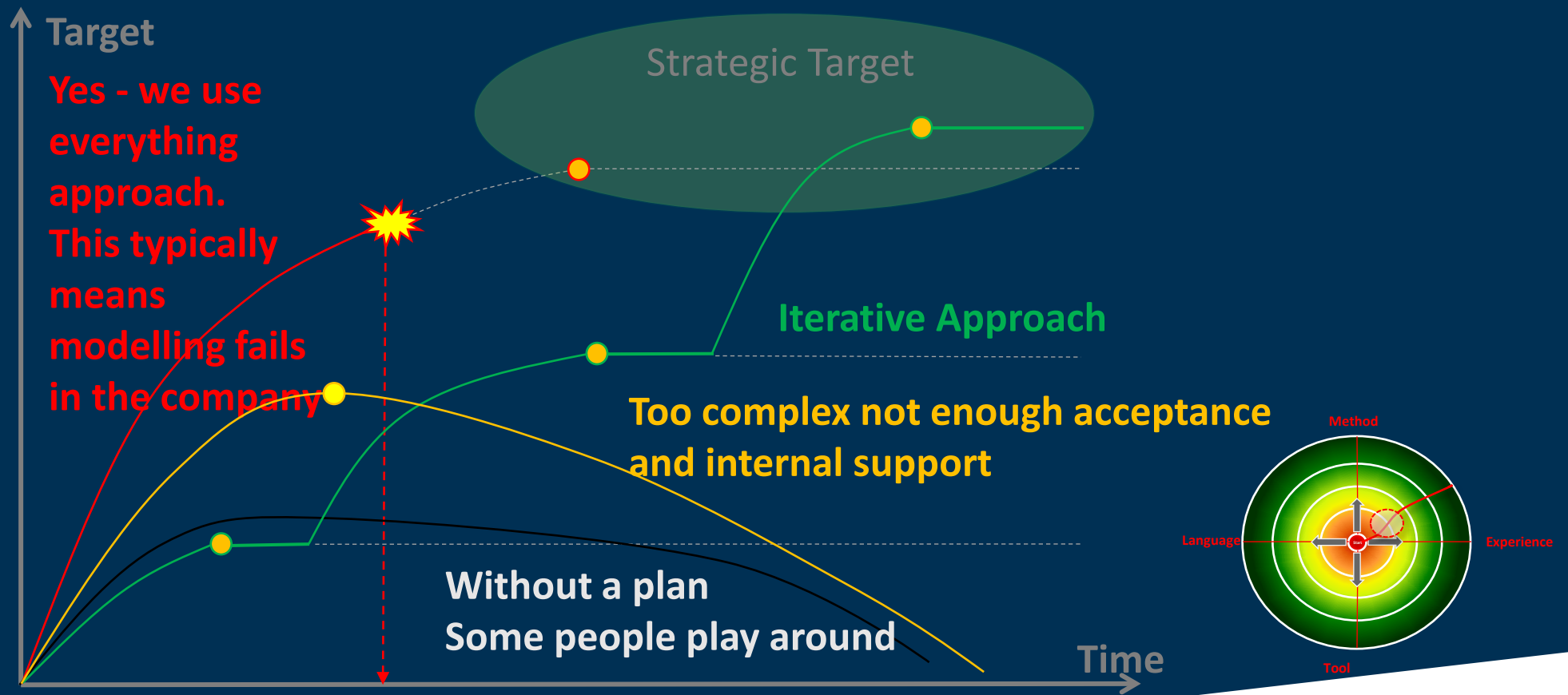
Challenges in the introducing of modeling approaches

“A fool with a tool is just a fool”

“A genius without a tool is not productive”



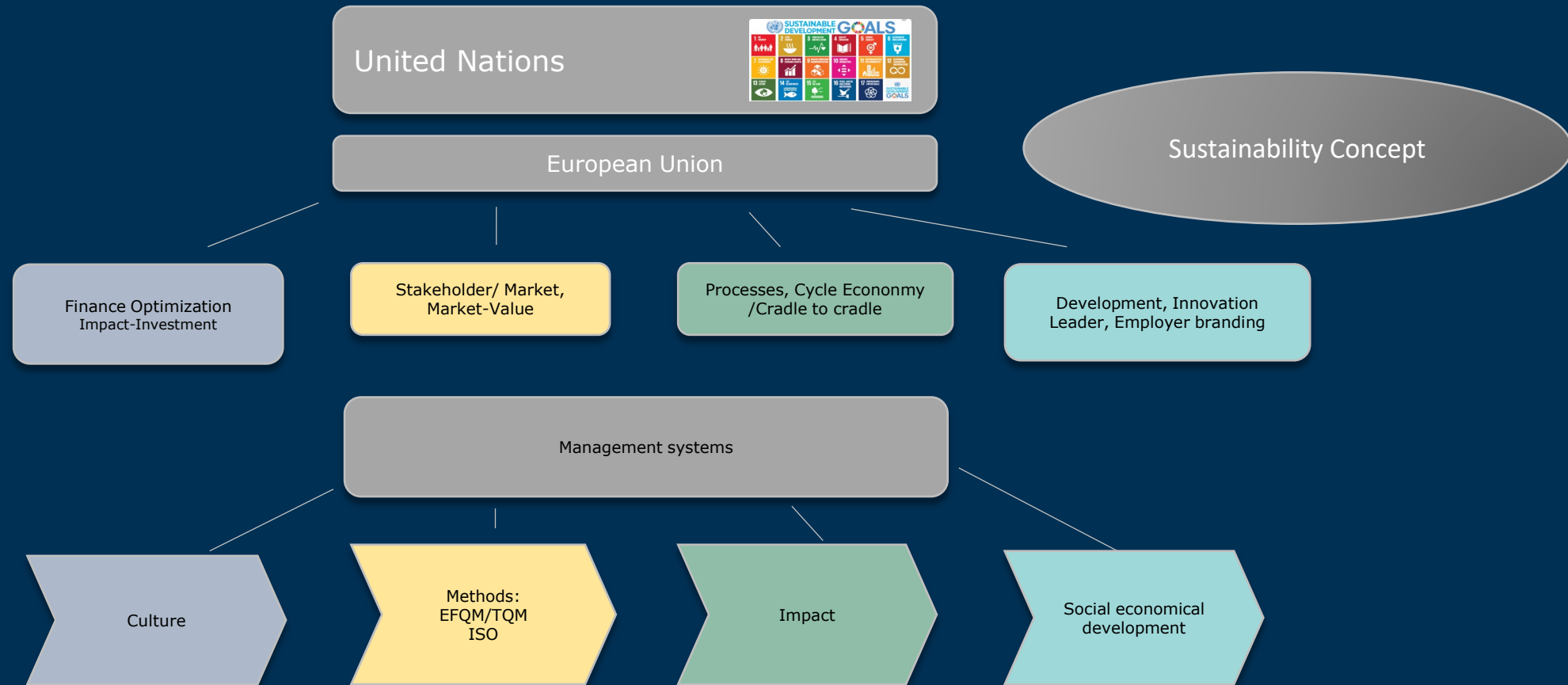
How to become successful with models



And the standards to achieve sustainability goals are...



Structure/eccos²²® orientation system



UN Sustainability Development Goals (SDGs)

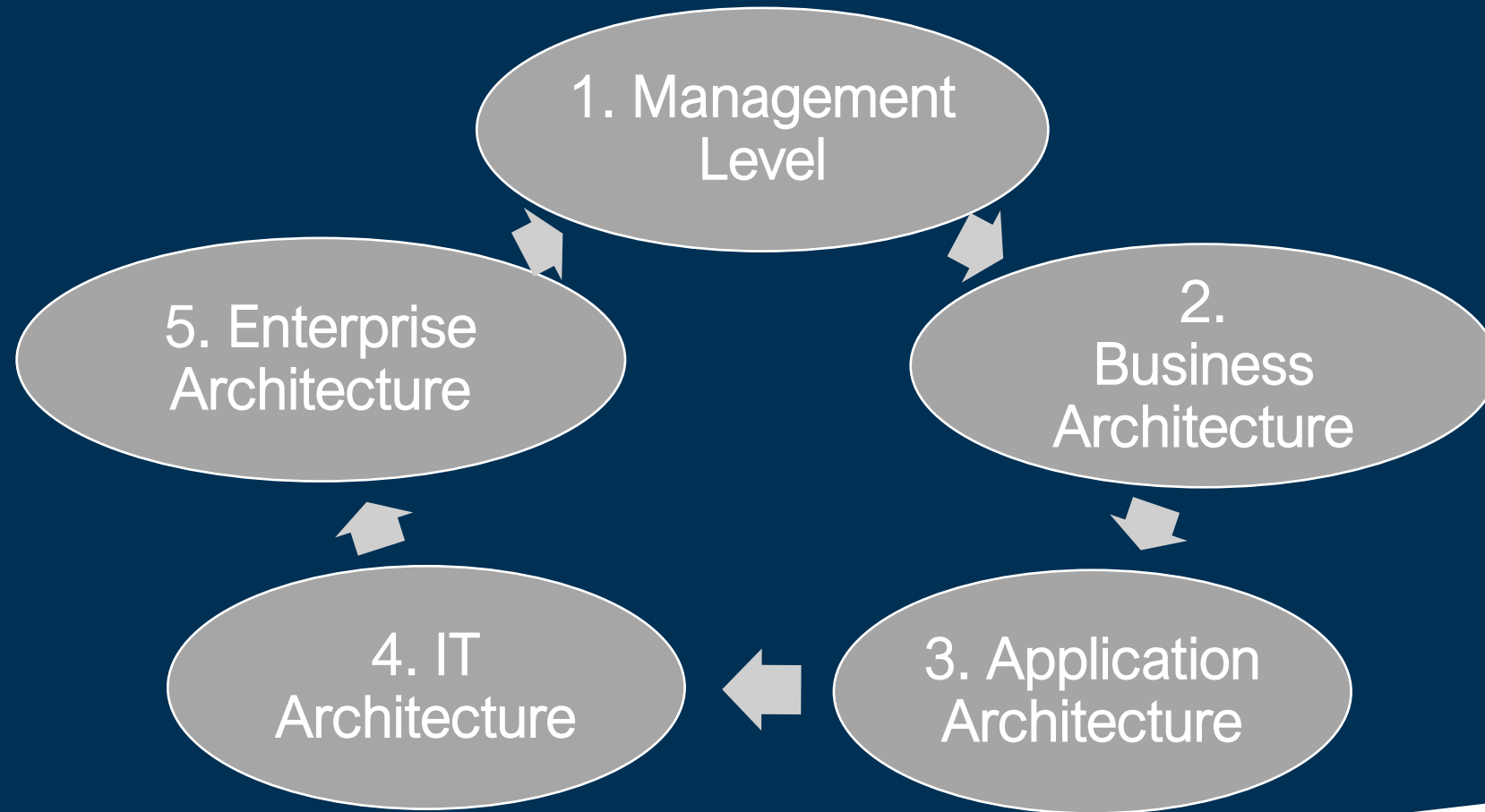




EU Green Deal

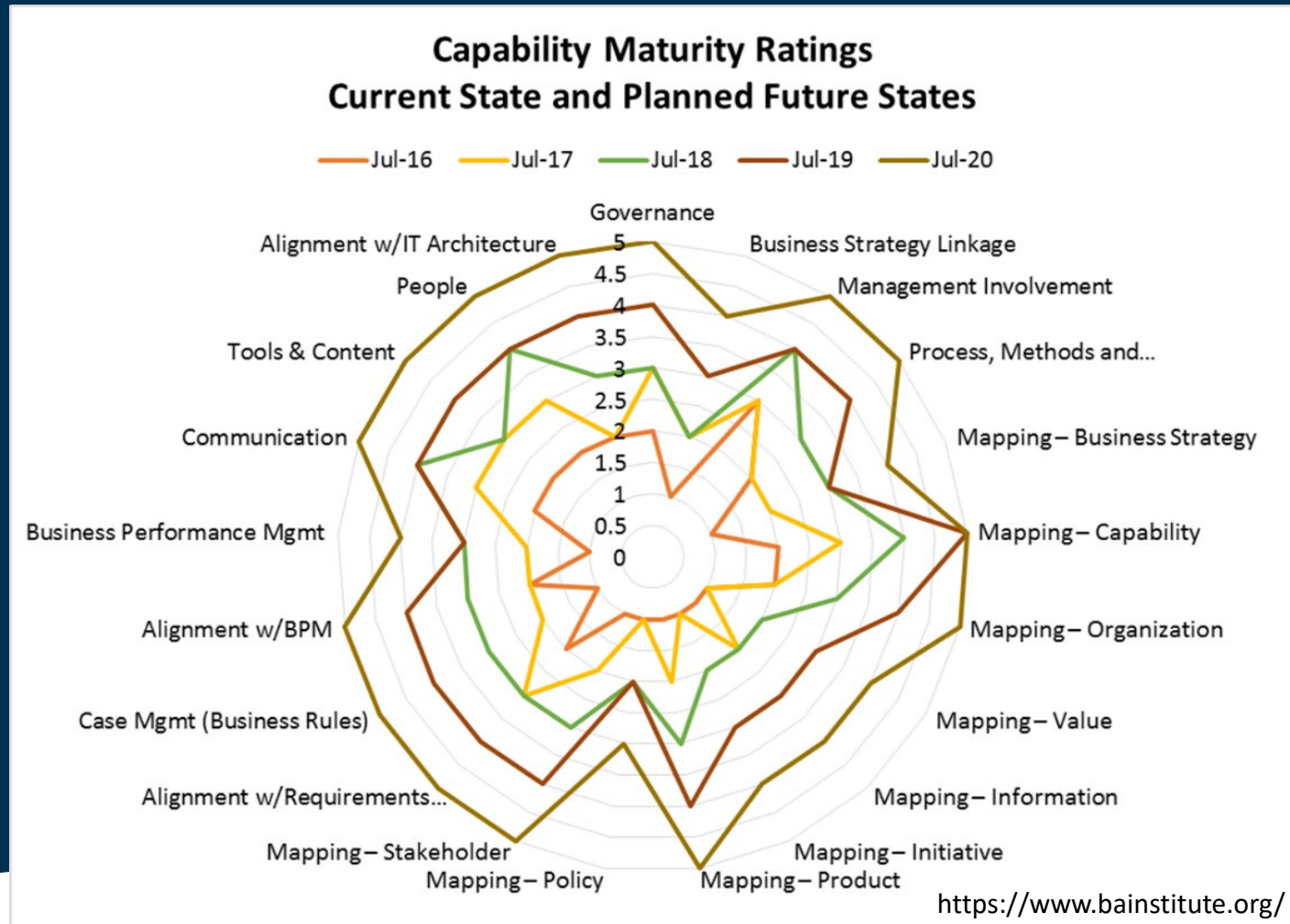
- a circular economy action plan
- a review and possible revision (where needed) of the all relevant climate-related policy instruments, including the Emissions Trading System,
- ...
- a sustainable and smart mobility strategy
- ...

Engagement Model



Business Architecture

- Business Capabilities
 - Business Map
 - AS-IS, TO-BE Gap analysis
- Business Processes
- Products
- Organizational Units



Management Level

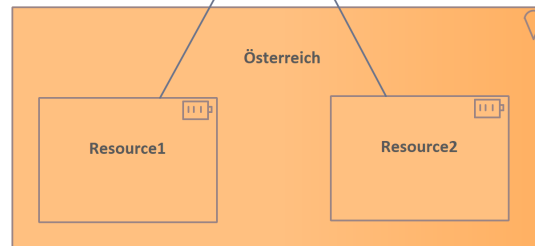
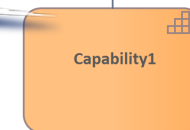
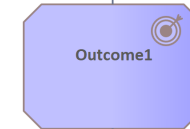
Strategic Target

Business Capability

motivation 5 - Gender Equality



5 - Gender Equality



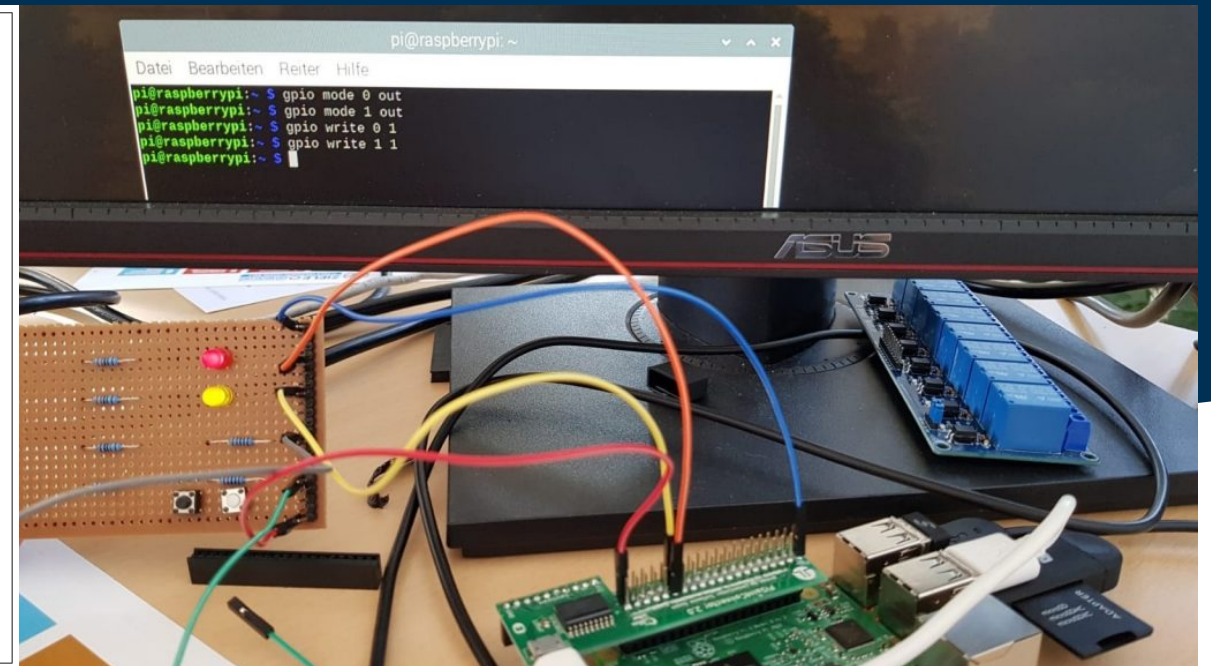
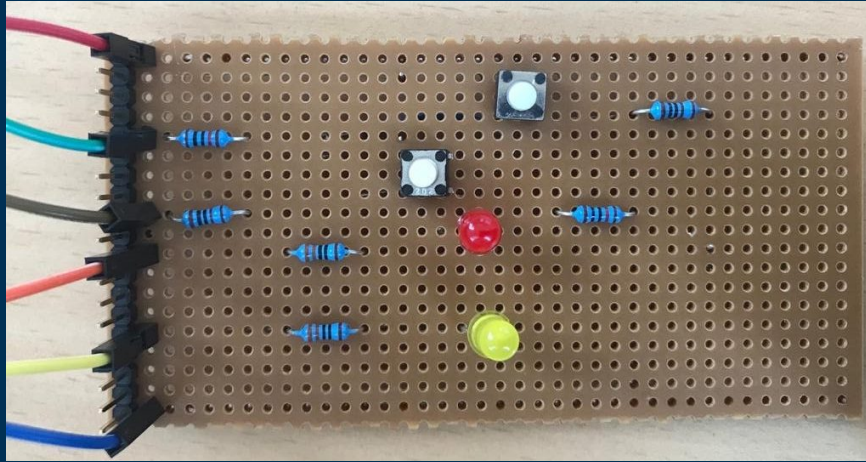
You need 5A

- Awareness from Management
- Attention
- Architects
- Architecture
- Architecture Management

Not only because it is possible

- 6 practioneers at Sparx in 2021
 - Model it first
 - Check if it is feasible, but also
 - Check if it is sustainable

Results: Irrigation System



Introducing S.E.A.

Sustainable Enterprise Architecture

S.E.A.

(Sustainable Enterprise Architecture)

- Due to the combination of CSR and IT, Sustainability Enterprise Architecture (S.E.A.) is an objectively measurable evaluation system for company performance. In addition, S.E.A. also a management approach that relies on long-term excellent performance, on the consideration of international standards and norms and the people as designers in the center. It forms an orientation framework for interest groups and creates a common basis for communication. In view of the current challenges, concepts for the holistic management of business and information processes are becoming increasingly important. Today, as in the future, it is a matter of bringing the entire service infrastructure, numerous sustainability standards and norms for companies into focus and creating an impact. An impact that includes the relevant stakeholders and creates a corporate architecture that enables long-term excellent performance.

S.E.A.

- The S.E.A. has an interdisciplinary function in the support partner area, as does the support departments quality, facility management, environment, marketing, PR, HR, etc. is reduced for verification, but also plays an interactive role as a sustainability coordination tool and connects different disciplines effectively and efficiently.
- This efficiency and effectiveness is also decisively determined by the design of the communication infrastructure. It is therefore important to provide the knowledge about the relationships between corporate strategy, business competencies and information infrastructure in a Sustainability Enterprise Architecture, as well as to give direction and to design and consistently manage it with international sustainability standards, norms and values.

S.E.A – Nominated for Constantinus Award



MDG for SDG

Demo Time

So it is clear:
S.E.A. with Sparx Enterprise Architect

BE THE CHANGE





TO ATTAIN
SUCCESS,

YOU NEED TO
CROSS THE
BRIDGE OF
PLANNING.

Adolf Loos, 1870 – 1933,
Austrian Architect