



ADVANCED DATA MODELING WITH IDEA

VIEW ON DATA STRUCTURES

WHO AM I?

- BERT DINGEMANS
- DATA ARCHITECT WITH A FOCUS ON BIG DATA AND DATA MODELING (IN EA)
- ZZP (INDEPENDENT CONSULTANT) IN THE DEMAND GROUP
- W: WWW.EAXPERTISE.NL
- M: BERT@EAXPERTISE.NL



EXTRA INFORMATION

- AUTHOR OF THE BOOK “DATA ARCHITECTUUR IN DE PRAKTIJK” AND “DATA MODELLEREN IN DE PRAKTIJK”
- TRAINER TFG ACADEMY AND ITMG DATA ARCHITECTURE AND BIG DATA
- TRAINING PARTNER FOR SPARX EA
- PARTICIPANT IN EAXPERTISE.NL



**ENTERPRISE
ARCHITECT**

Authorized Training Partner

Big Data Science School

CERTIFIED BIG DATA

Science Professional

EExpertise
make you model

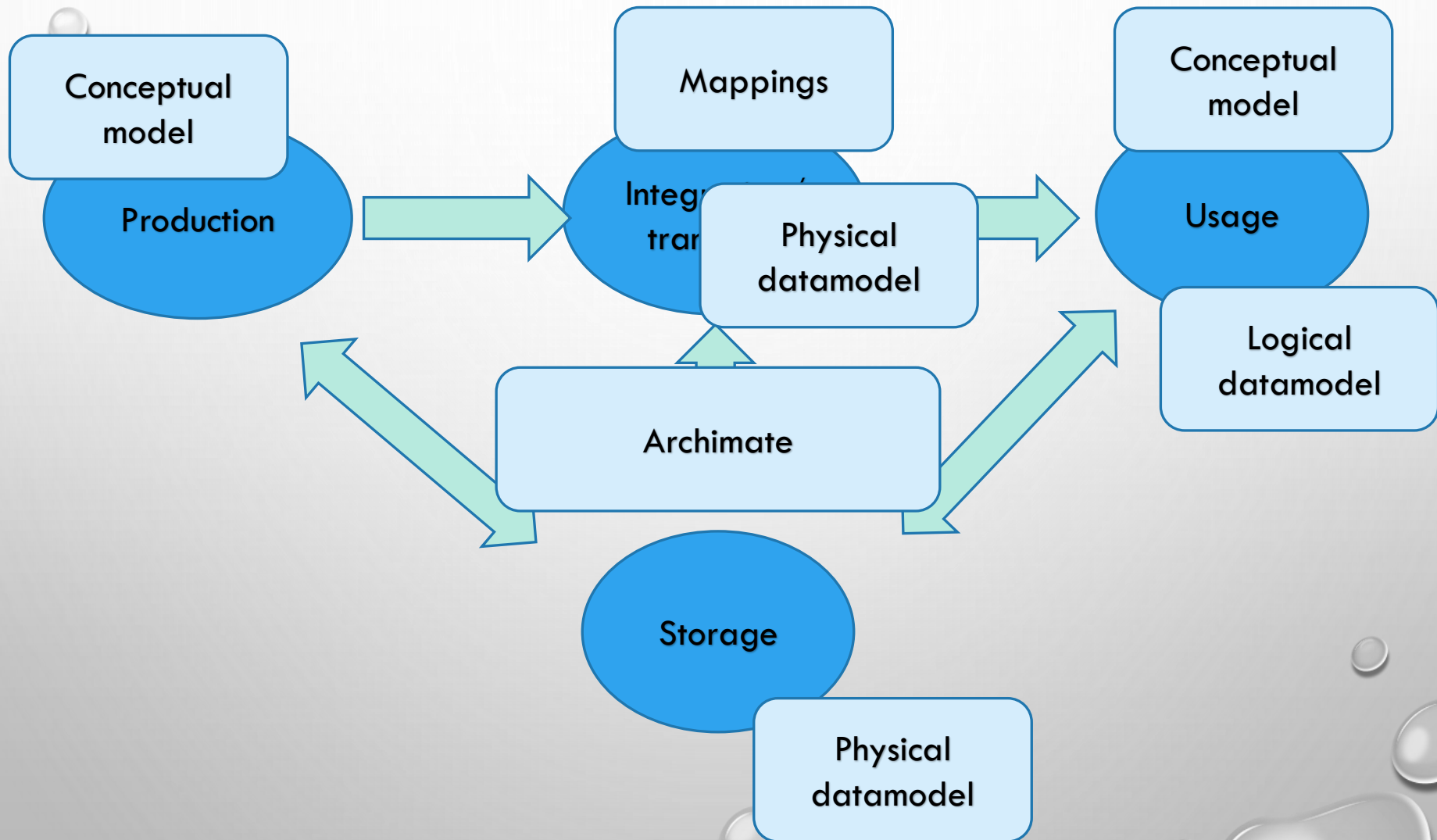
APPROACH OF TODAY

- IDEA BEHIND IDEA
 - COMMUNITY
 - SAMPLE REPO, SCRIPTS AND ADDON
- INSTALLATION
- VIEWPOINTS
- HELPERS
 - PACKAGE
 - DIAGRAM
 - ELEMENT
- ARCHIMOID & NO DATA FAULT WINDOWS
- SCRIPTS
- DEDUPLICATOR
- TEAM AWARE MODELLING
- RELEASE MANAGEMENT

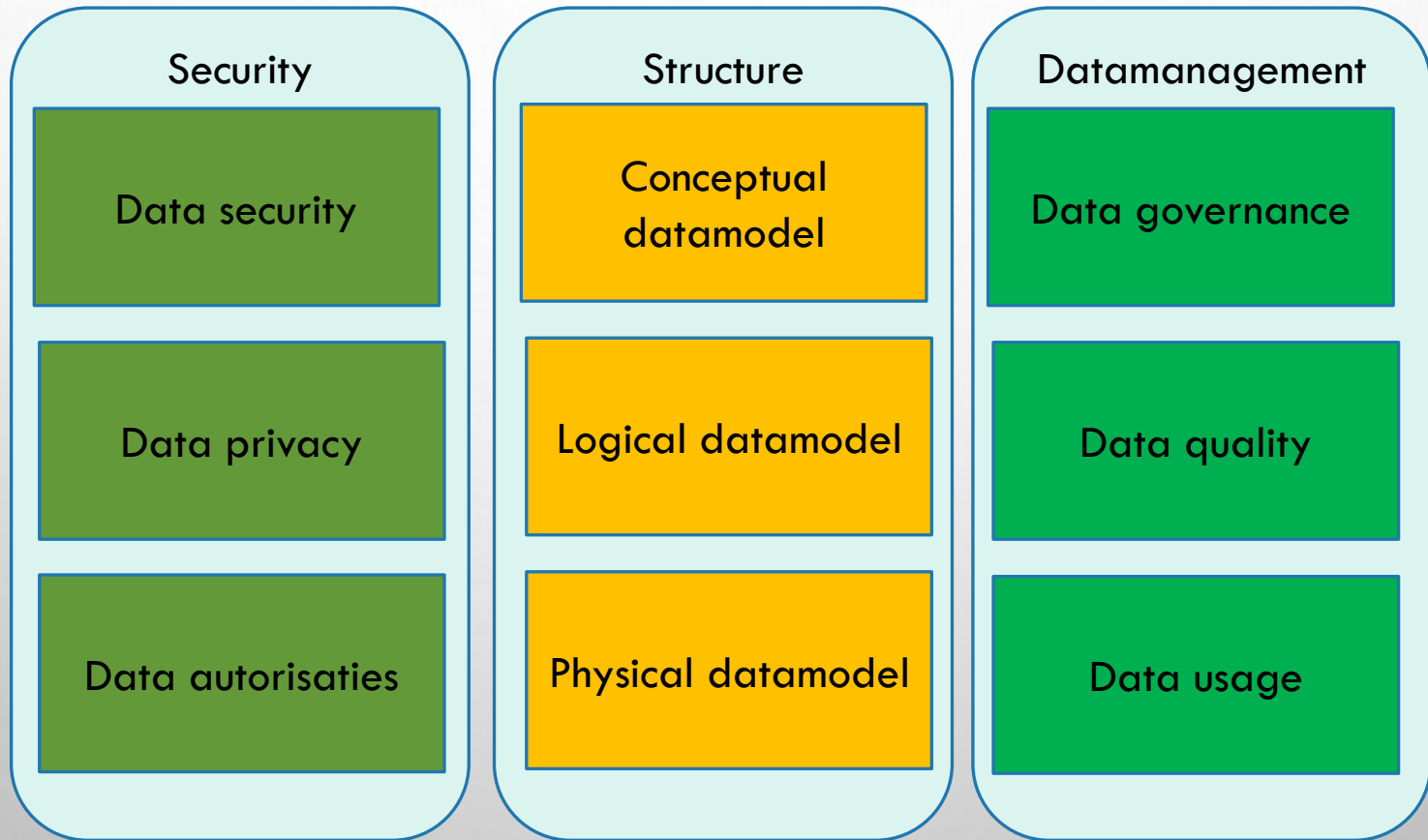
IDEA COMMUNITY

- IDEA IS AN OPEN SOURCE INITIATIVE IN THE NETHERLANDS
- A NUMBER OF ORGANISATIONS IS PARTICIPATING IN THE FUNCTIONALITIES DEVELOPED
- SOLUTIONS ARE AVAILABLE AS ADDON, SCRIPTS, EXAMPLES, WEBVIDEOS AND AN MDG
- MORE INFORMATION: [HTTP://EAXPERTISE.NL/IDEAEN.ASPX](http://EAXPERTISE.NL/IDEAEN.ASPX)

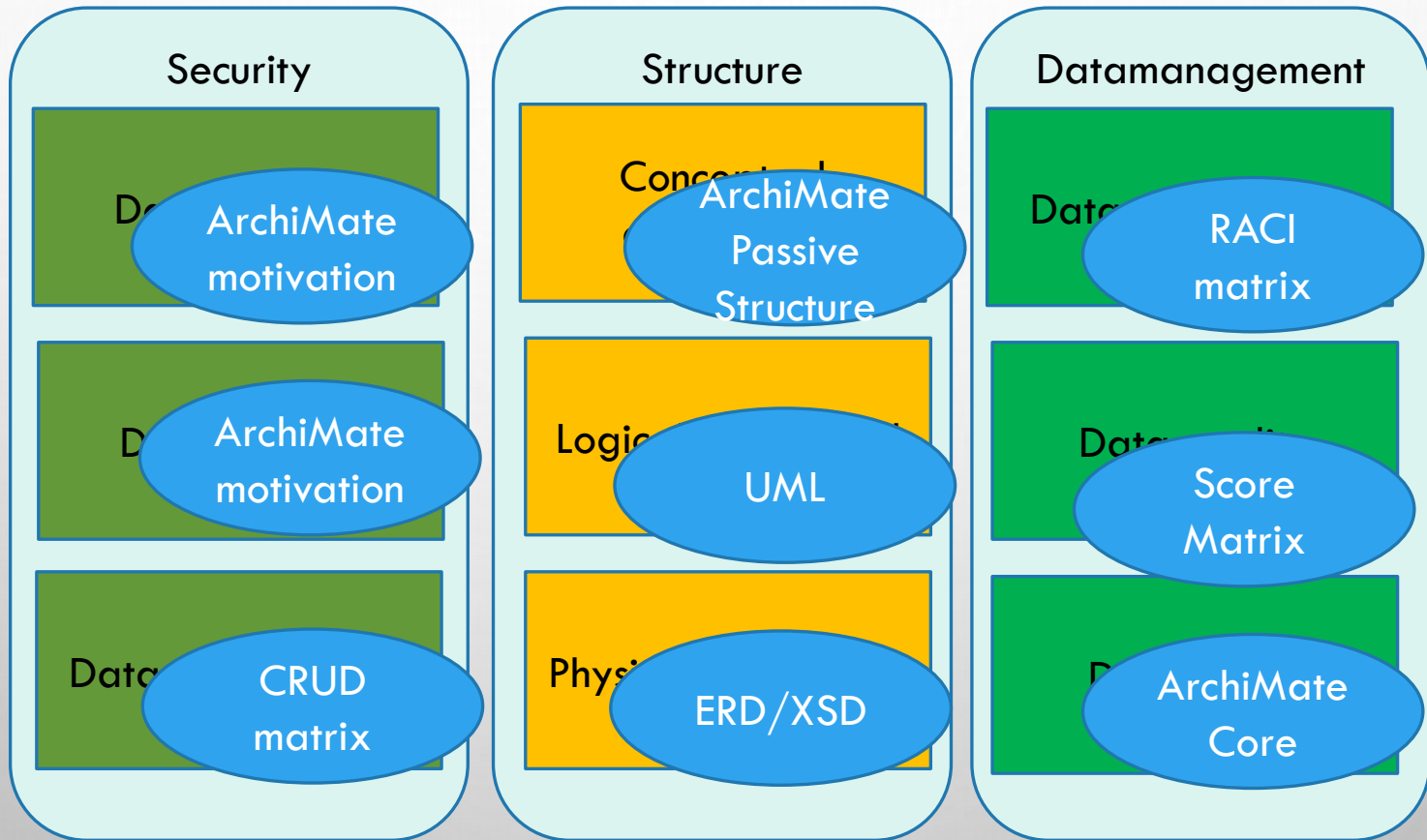
MODELING AND VIEWPOINTS



LOGICAL FUNCTIONS IN A DATA MODEL?



WHAT ARE VIEWPOINTS FOR EEN DATA REGISTER?



DOWNLOADS

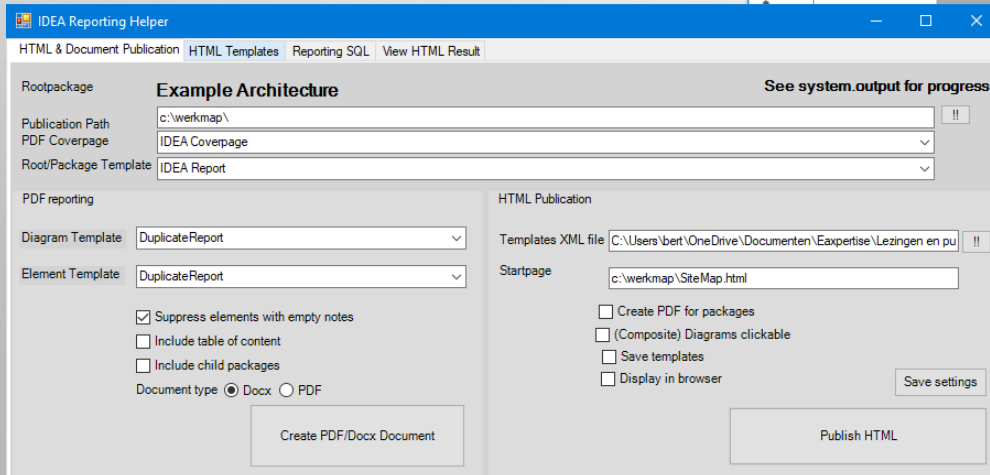
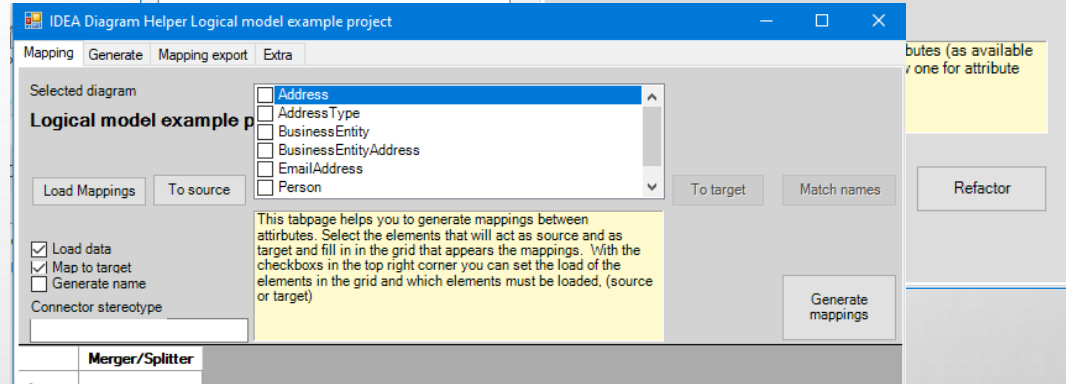
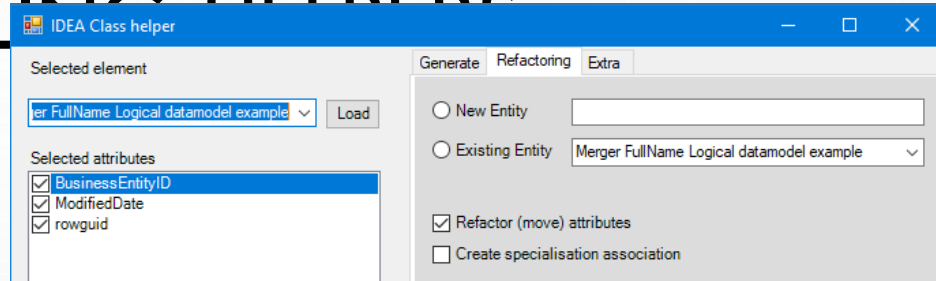
- FOR THE SESSION WE USE AN EAP WITH A STRUCTURE AND SCRIPTS AND INSTALL THE
- IN THIS SESSION WE ARE GOING TO CREATE A MODEL IN THIS EAP AND USE THE SETUP (RUN THE EXE AS ADMINISTRATOR)

http://eexpertise.nl/upload/idea_trainingen.zip
<http://eexpertise.nl/upload/ideasetup.exe> (or .zip)

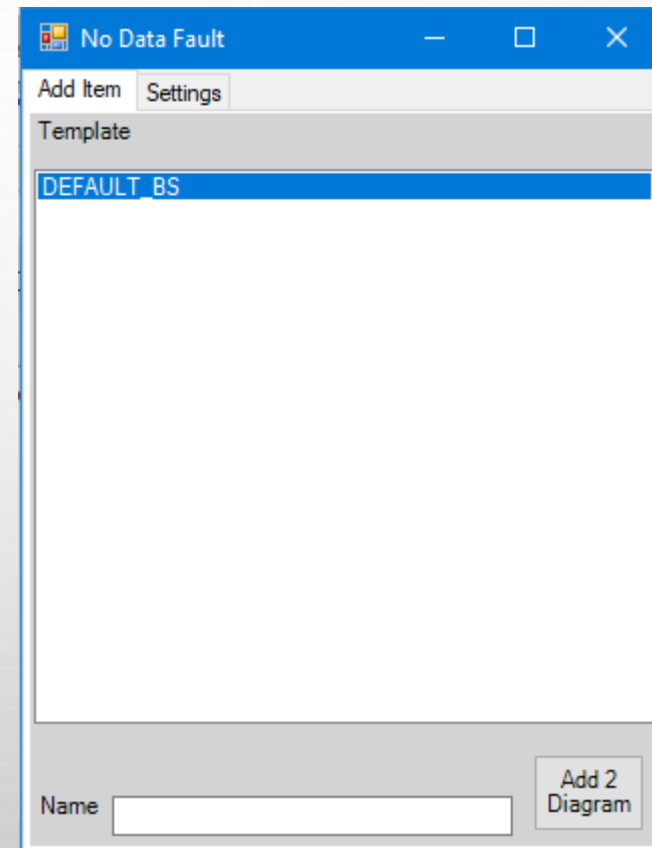
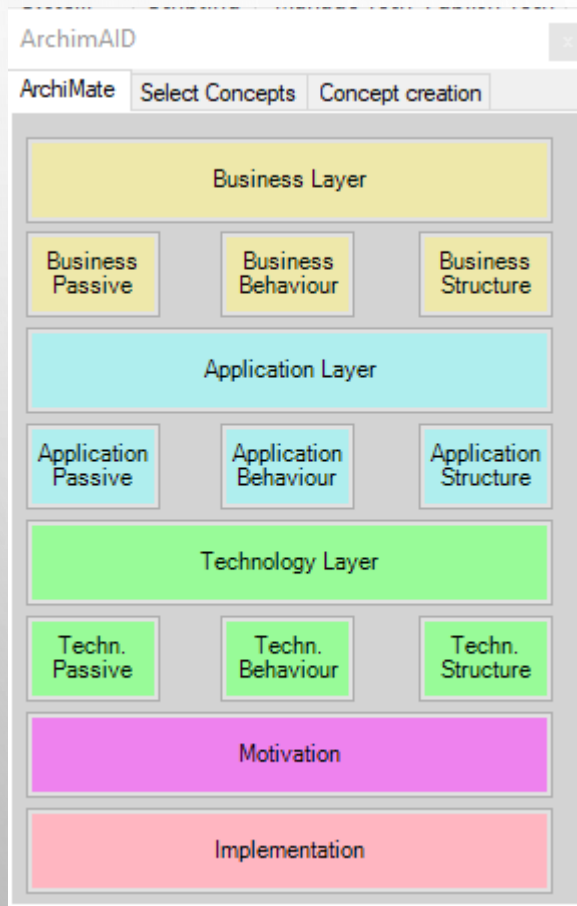
Demo of the EAP
content

DATA MODELING HELPERS

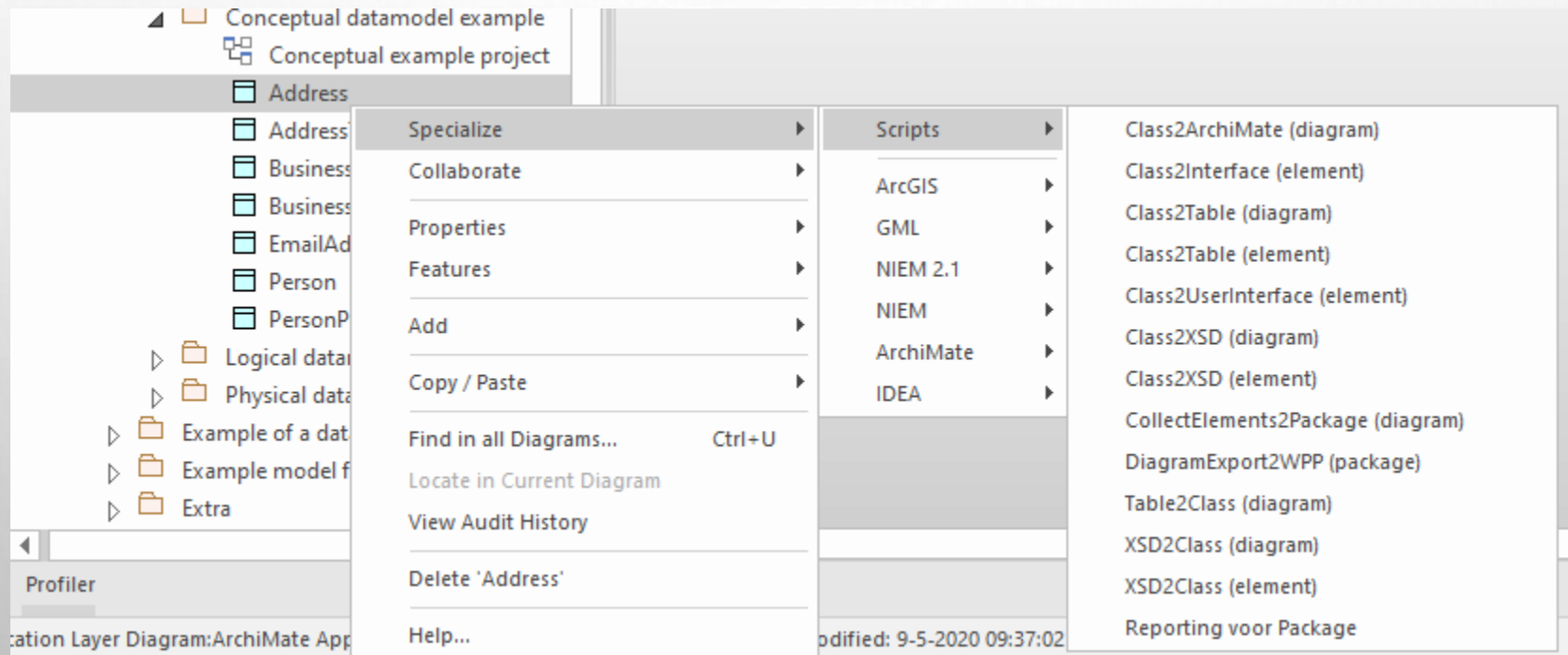
- ELEMENT
- DIAGRAM
- PACKAGE



ARCHIMAT AND NO DATA FAULT

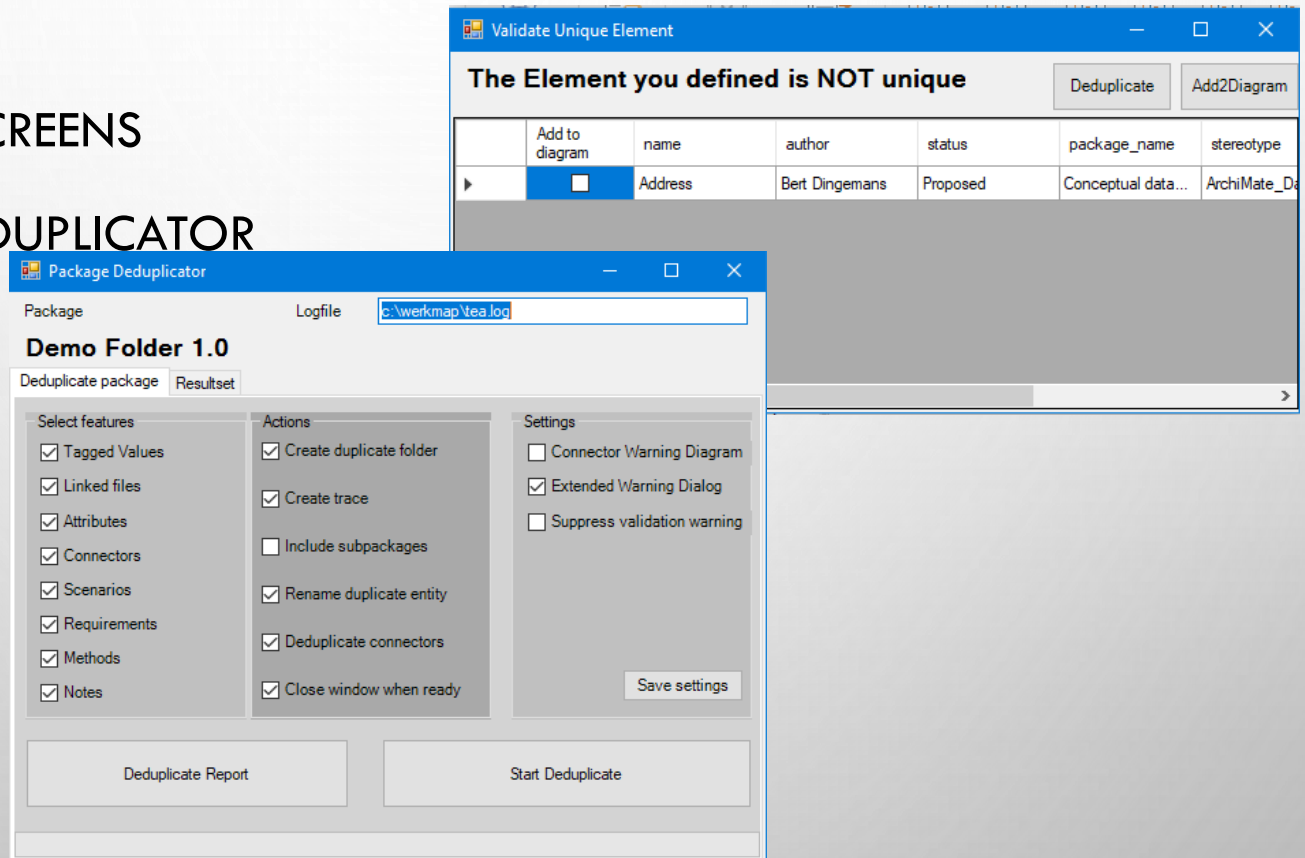


SCRIPTS



DEDUPLICATOR

- WARNING SCREENS
- PACKAGE DEDUPLICATOR



TEAM AWARE MODELING

The screenshot shows the 'Data Element Deduplicator' application window. At the top, the title bar reads 'Data Element Deduplicator'. Below the title bar, there are two dropdown menus: 'Original Elements' and 'Duplicate elements', both containing the text 'Address Demo Folder (1.0) by Bert Dingemans'. Below these menus, there is a checkbox labeled 'Delete duplicate after routine' which is currently unchecked. To the right of the checkbox are three buttons: 'Orientation', 'Load grids', and 'Start Deduplicate'. Below the buttons, there are five tabs: 'Object', 'Attributes', 'Operations', 'Associations', and 'Tagged Values'. The 'Object' tab is selected. The main area of the window is divided into two panes. The left pane is a large grey area with a small header 'Selected status'. The right pane is a table with the following columns: 'Object', 'SourceCard', 'DestCard', 'notes', and 'Selected status'. The table contains several rows, with the 'Selected status' column containing the word 'New' for each row. The table has a scrollbar on the right side.

Object	SourceCard	DestCard	notes	Selected status
				New
ager				New
				New
				New
				New
ract...				New
em				New
iana...				New
				New
				New
				New
				New
y A...				New
				New

RELEASE MANAGER

NS ReleaseManager for EA

Release manager for baselines in develop and production environments

Package

Team package

Restore baseline Select baseline

PackageName	FolderName	RestoreBaseLine	Version	Pad

Repository

Version

Exchange directory

MORE INFORMATION

- [HTTP://EAXPERTISE.NL/IDEAEN.ASPX](http://EAXPERTISE.NL/IDEAEN.ASPX)
- [HTTP://EAXPERTISE.NL/WPPEN.ASPX](http://EAXPERTISE.NL/WPPEN.ASPX)
- [HTTPS://YOUTU.BE/1PZNLINSYJW](https://YOUTU.BE/1PZNLINSYJW)

DISCUSSION



DO THESE MODELING
TECHNIQUES AND THEIR
INTEGRATION HELP



ARE THIS THE RIGHT
TECHNIQUES COMBINED?