



# EA Global Summit 2020

June 1st to 5th | Connect with World's Prolific Sparx EA Practitioners

## Enterprise Visualization and Transformation using Labnaf

Labnaf is an innovative and highly automated solution for enterprise visualization and transformation. It seamlessly unifies numerous standards and best practices

**Alain De Preter**

Founder, Labnaf

**Orsolya Nemeth**

Sparx Services Central Europe



2nd June



PDT 06.00  
CET 15.00  
AEST 23.00



60 Min

Register

[eaglobalsummit.com](http://eaglobalsummit.com)



**Prolaborate**



## Alain De Preter



Founder, Labnaf

### Enabling

- Language, Framework & Tool Engineering
- as Modeling Coach

### Applying

- Strategy, Enterprise Architecture, Solution Architecture, Analysis, Design & Implementation
- Banking, Transportation, Pharmaceutical, Cinema, Legal...

### Contact

- [alain.depreter@Labnaf.one](mailto:alain.depreter@Labnaf.one)
- [linkedin.com/in/alain-de-preter](https://www.linkedin.com/in/alain-de-preter)



## Orsolya Németh

Consultant, Trainer  
and Speaker



### Enabling

- Language, Framework
- as EA Trainer

### Applying

- Enterprise Architecture, Solution Architecture, Analysis, Design & Implementation
- Insurance, Banking

### Contact

- [orsolya.nemeth@sparxservices.eu](mailto:orsolya.nemeth@sparxservices.eu)
- [linkedin.com/in/orsolya-nemeth](https://www.linkedin.com/in/orsolya-nemeth)

# A turnkey solution

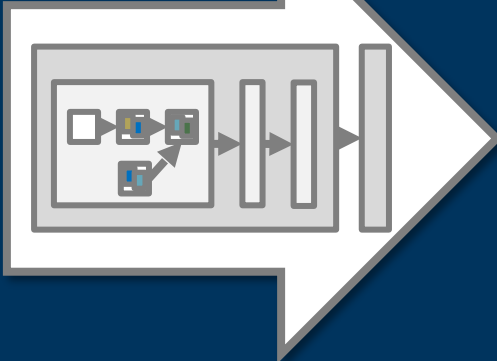


**Driving**

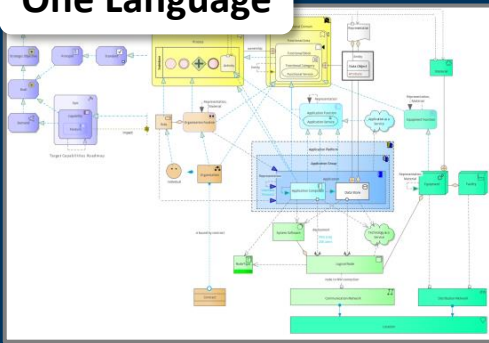
**Transformations**



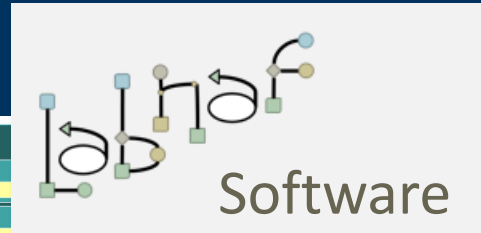
## One Transformation Process



## One Language



## One Shared Database



**Sales**

- B2B Sales
  - B2B Indirect Sales
- B2C Sales
  - B2C Order Management
  - B2C Pricing Management
  - B2C Self-Service Channel
- B2I Sales
  - Bulk Distribution
  - Face-to-Face Distribution
- Sales Channel

Applications: 700+ Most Expensive: X32 Server

**Software**

Order Manager ES

Parties (using PaaS)

Customers

Customers DS

Car Fleet

last

X32 Car Fleet as a Service

X32 Sales As A Service

X32 Order Manager

PaaS

Azure Application Service Environment

Azure X32 DB

last

Azure Virtual Machine

Azure Virtual NSG

### One Software

- 1: Android, 3.3%
- 2: Azure Virtual Machine, 43.3%
- 3: IOS, 3.3%
- 4: Linux, 13.3%
- 5: Windows Desktop, 20.0%
- 6: Windows Server, 16.7%

CRM (using SaaS)

CRM

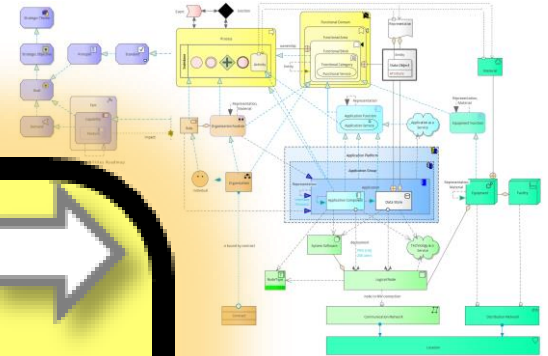
CRM DS

Component	Platform	Usage
Active Directory	Windows Server	100%
Ans	Windows Server	100%
Adaptive Cash Desk	Windows Server	100%
Believe CRM	Windows Server	100%
CRM ES	Windows Server	100%
Customer Mobile Application	Android / IOS	100%
Demarcus	Windows Server	100%
Expense Web Browser	Windows Server	100%
Intera	Windows Server	100%
Jupiter Cash Desk	Windows Server	100%
Label Provided by Enterprise Architect	Windows Server	100%
LOUIS X32	Windows Server	100%
Mail Server	Windows Server	100%
Mars	Windows Server	100%
Mars IntrosApp	Windows Server	100%



# Driving Transformations

*Same language  
end to end*

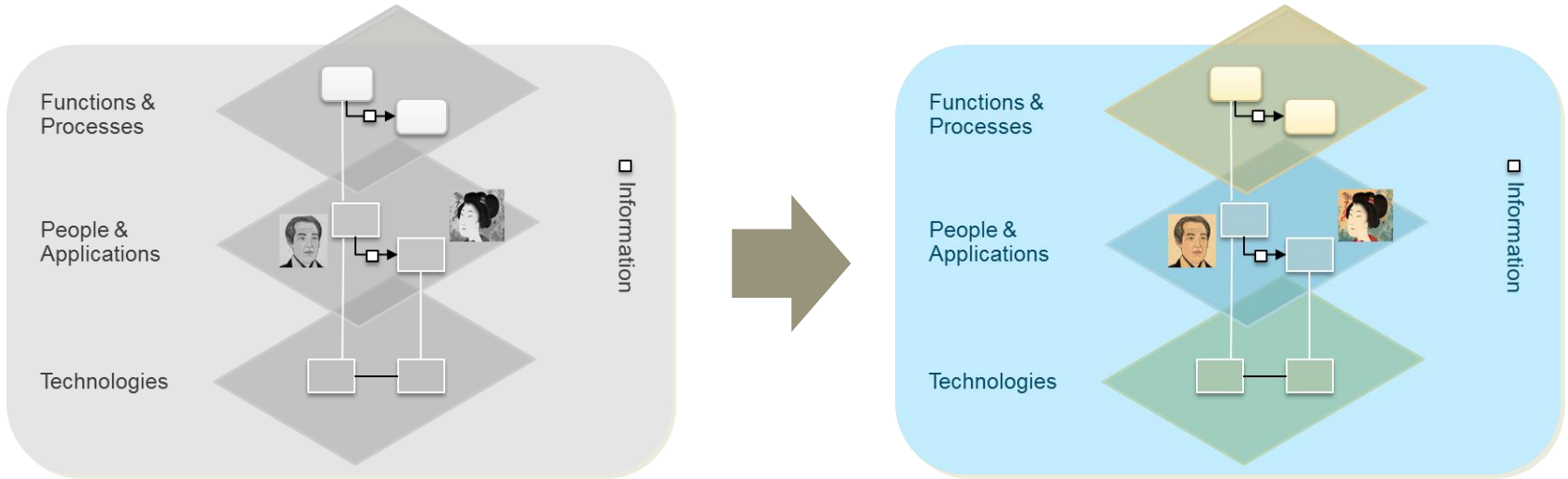


**Drive Changes to  
the Operating  
Platform**



# Transformation Process

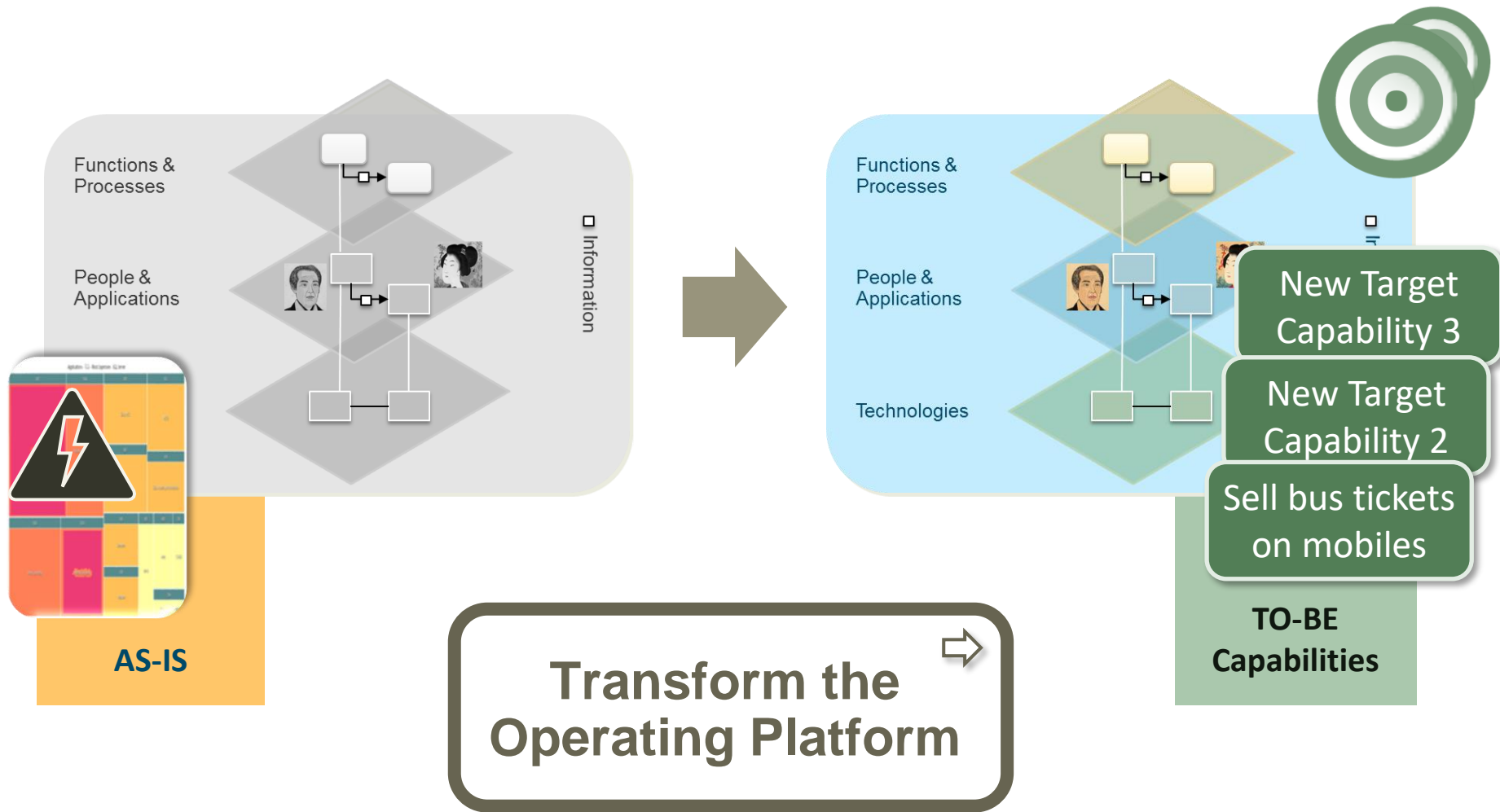
Changing the way the organization works



**Transform the  
Operating Platform** ➔

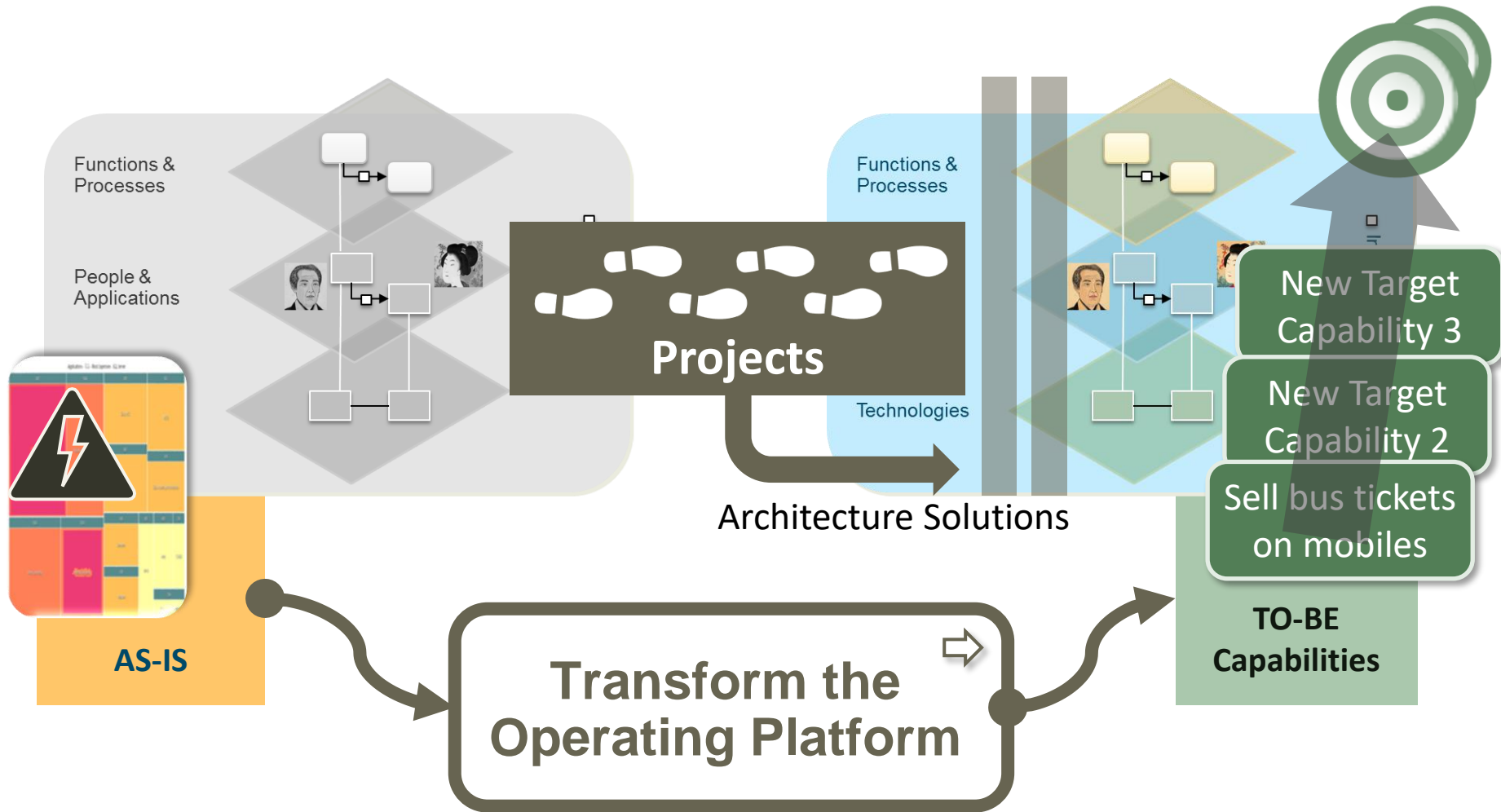
# Transformation Process

Changing the way the organization works



# Transformation Process

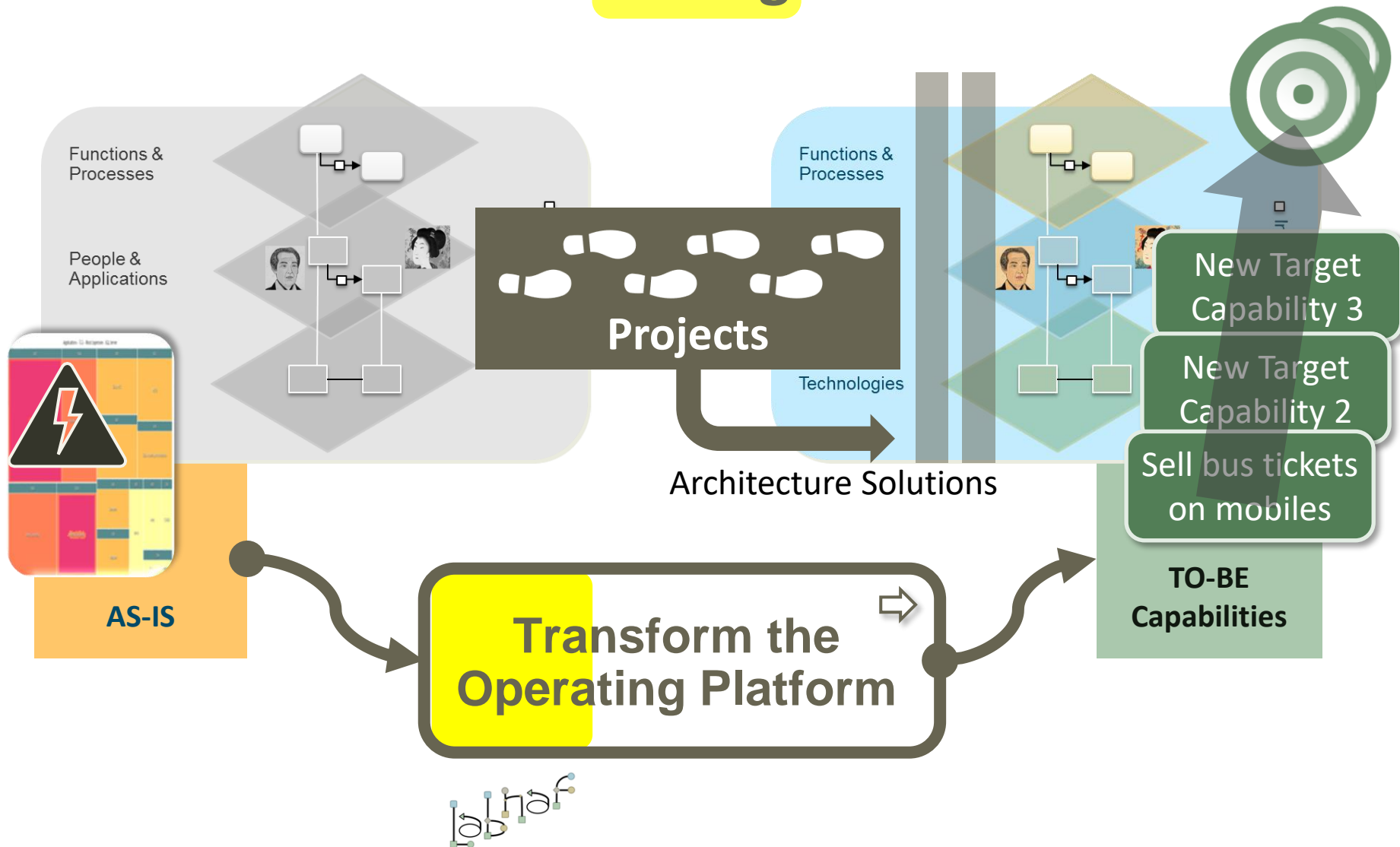
Changing the way the organization works





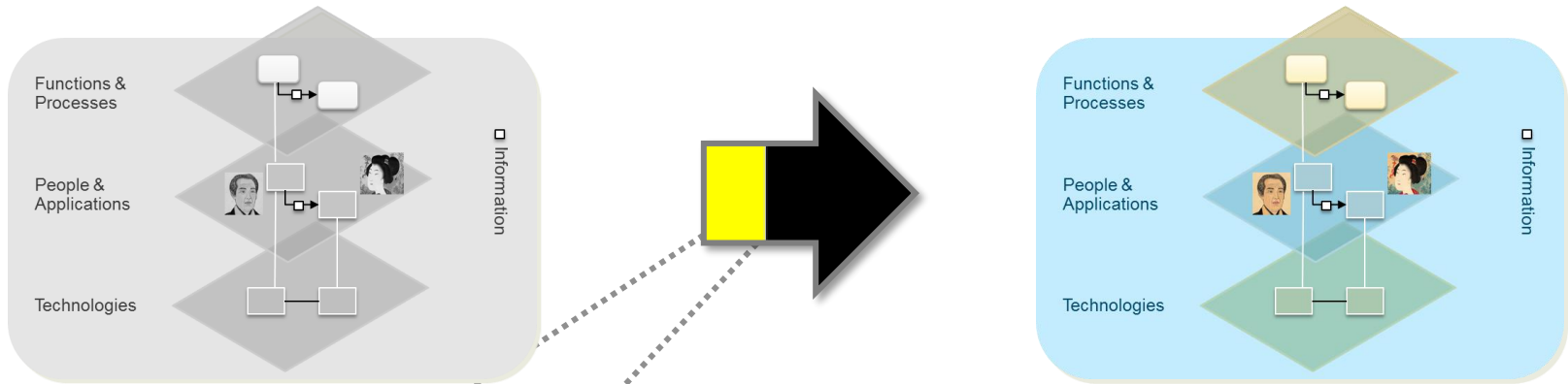
# Transformation Process

Labnaf focuses on **driving** Transformations

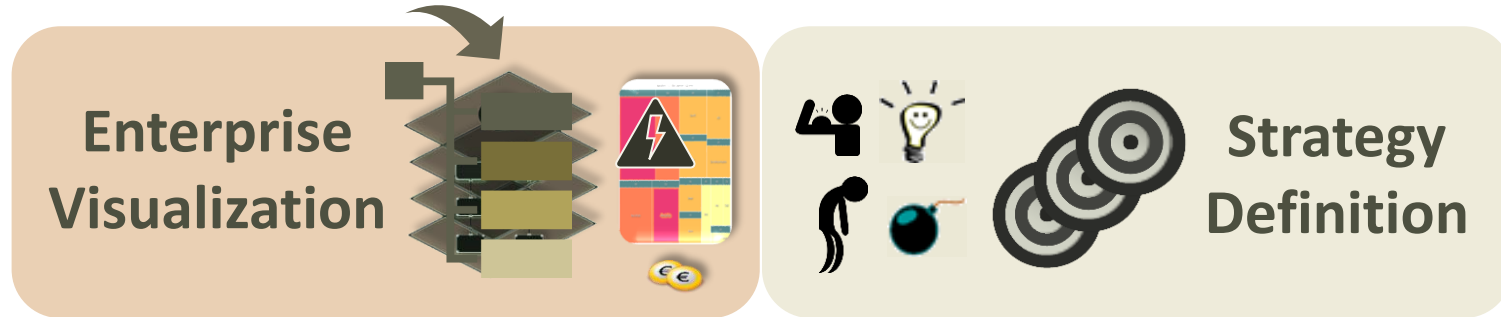


# Transformation Process

Labnaf focuses on **driving** Transformations



# Drive Changes to the Operating Platform



Marketing & Sales		List of applications supporting the domain.	Legend for Enterprise Functions
<b>Multi-channel Sales</b> - Order Management		Ares	Differentiator = ? = Y = N
<b>B2B Sales</b> - B2B Indirect Sales		Athena Cash Desk Customer Mobile Application Demeter	
<b>B2C Sales</b> - B2C Order Management - B2C Self-Service Channel		Hera Janus	Externalized = Y = P = N
<b>B2I Sales</b> - Bulk Distribution - Face-to-Face Distribution		Jupiter Cash Desk LOGIN B2B Neptune Venus Cash Desk Zeus Pricing Zeus Sales Records Management	
<b>Sales Master Data Management</b> - Pricing Management - Product Management			Entirely externalized Partially externalized Not externalized (default)
			<b>Nb of Applications / Enterprise Function</b> 0 1 2 or more

# Drive Changes to the Operating Platform

Enterprise  
Visualization



Strategy  
Definition

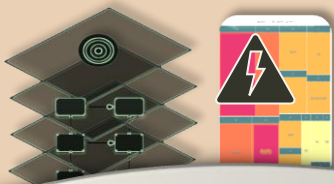
Strategy Execution



Capabilities Roadmaps

# Drive Changes to the Operating Platform

Enterprise Visualization



Strategy Definition

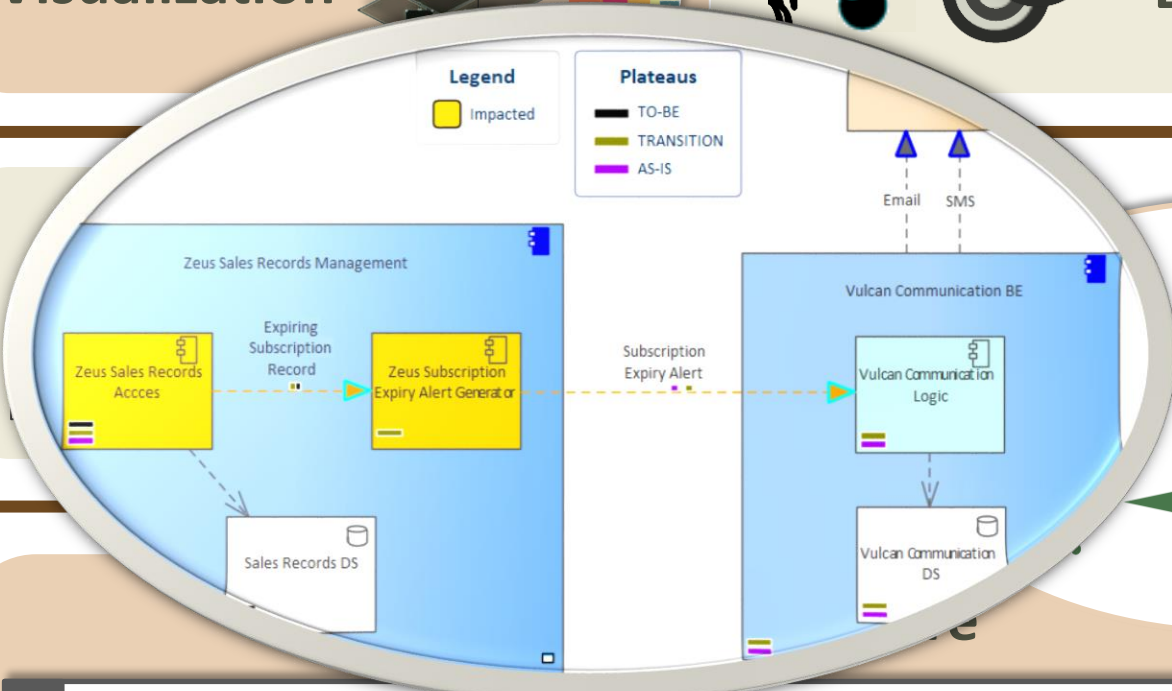


**Legend**

- Impacted

**Plateaus**

- TO-BE
- TRANSITION
- AS-IS



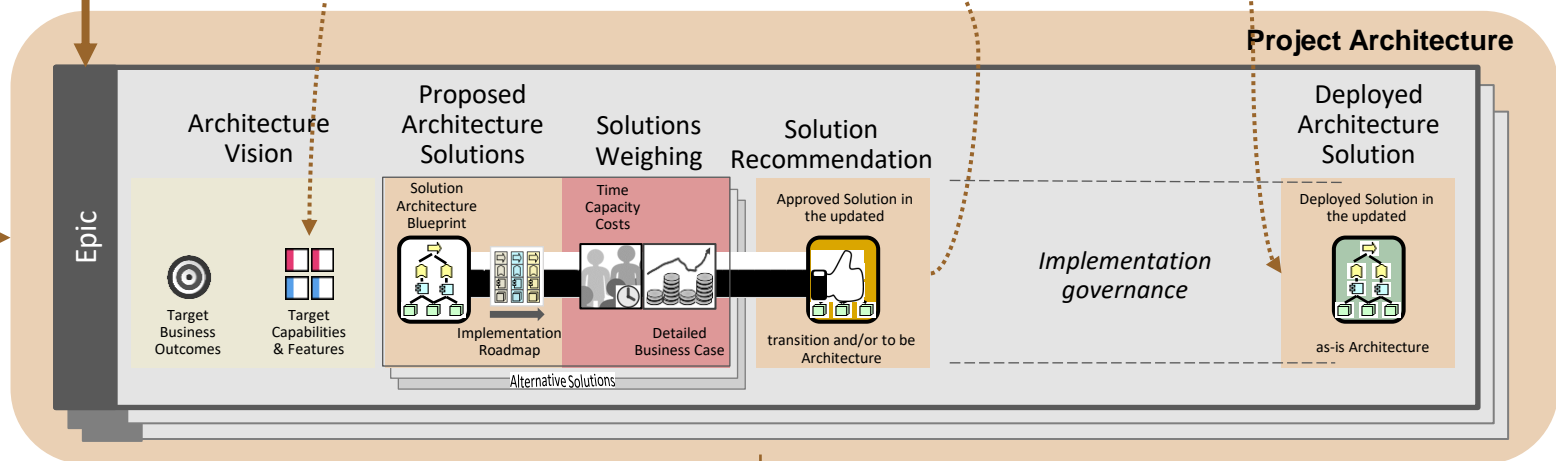
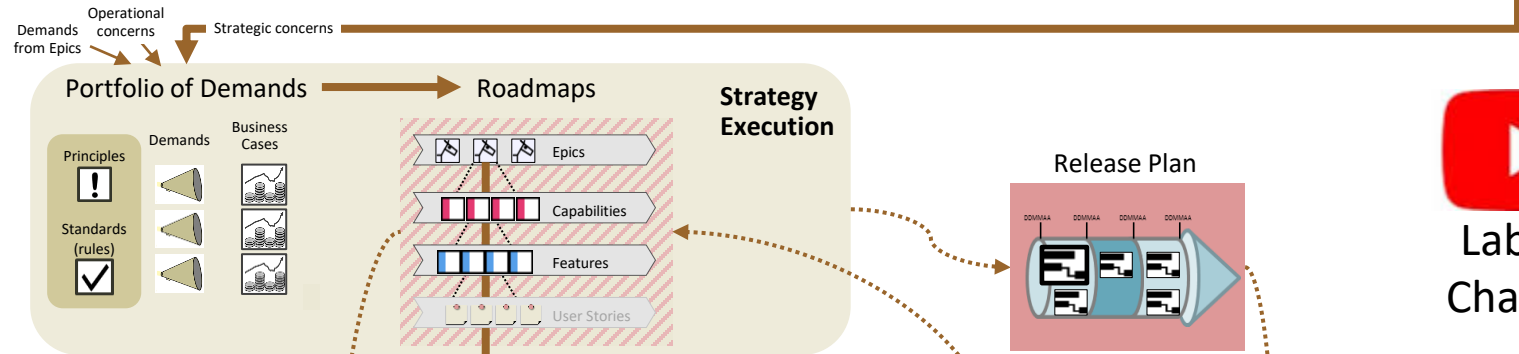
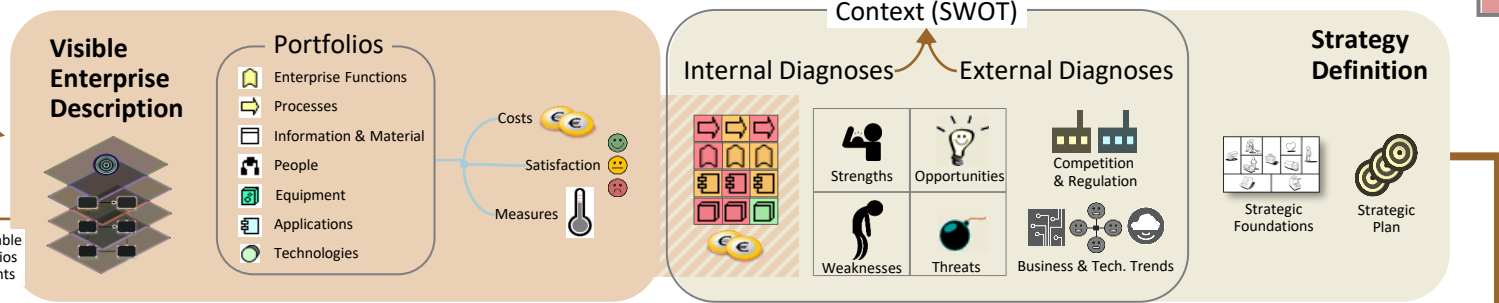
**Epic**



# Drive Changes to the Operating Platform

**Legend**

- Envisioning
- Architecture
- Planning



Re-useable Portfolios Contents

Operational concerns

Strategic concerns

Demands from Epics

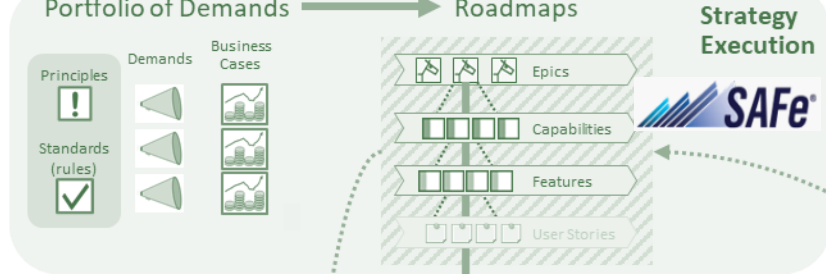
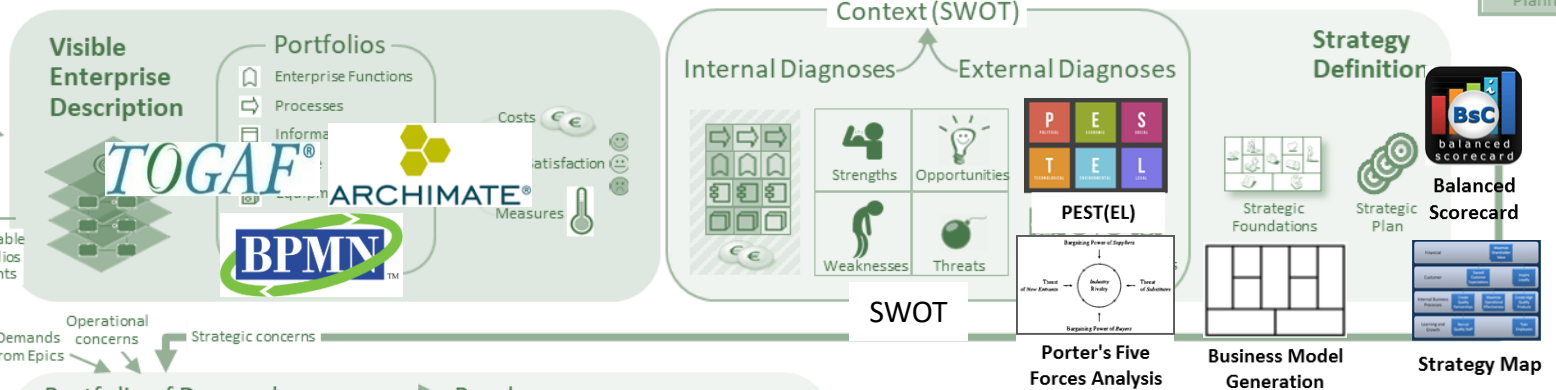
Architecture Solution Contents



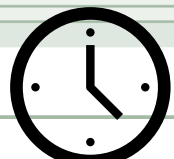
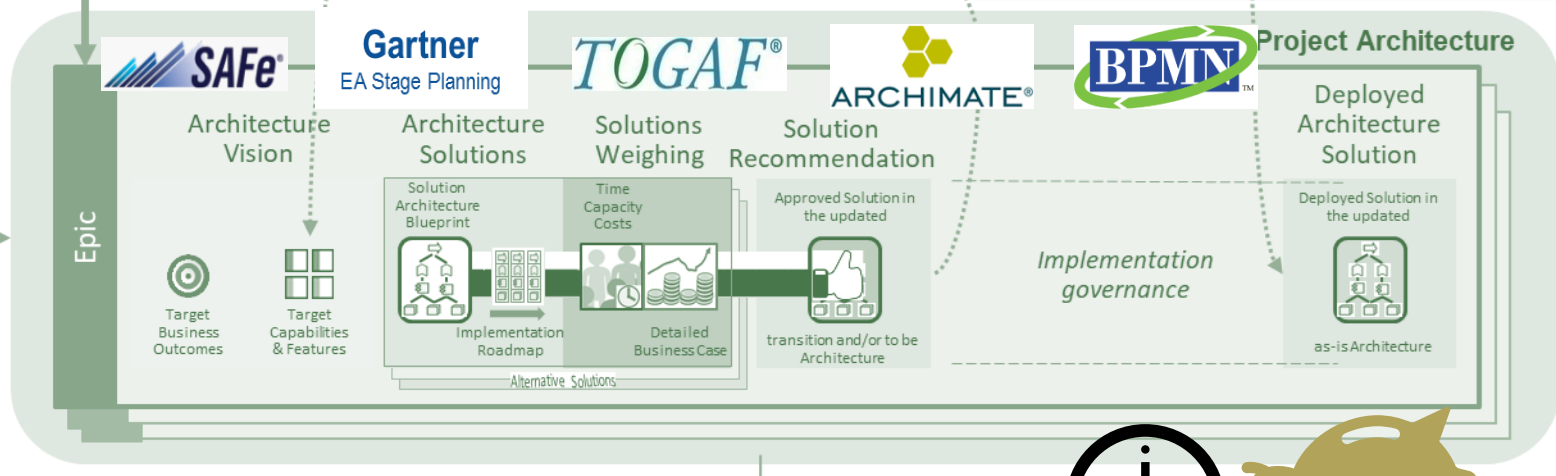
# Drive Changes to the Operating Platform

Legend

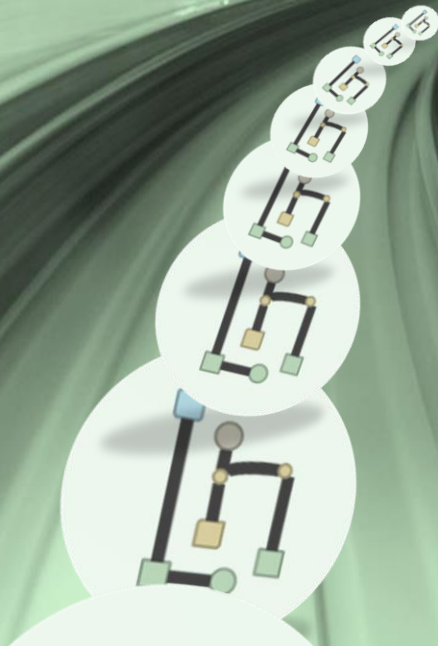
- Envisaging
- Architecture
- Planning



**Unified Standards and Best Practices**



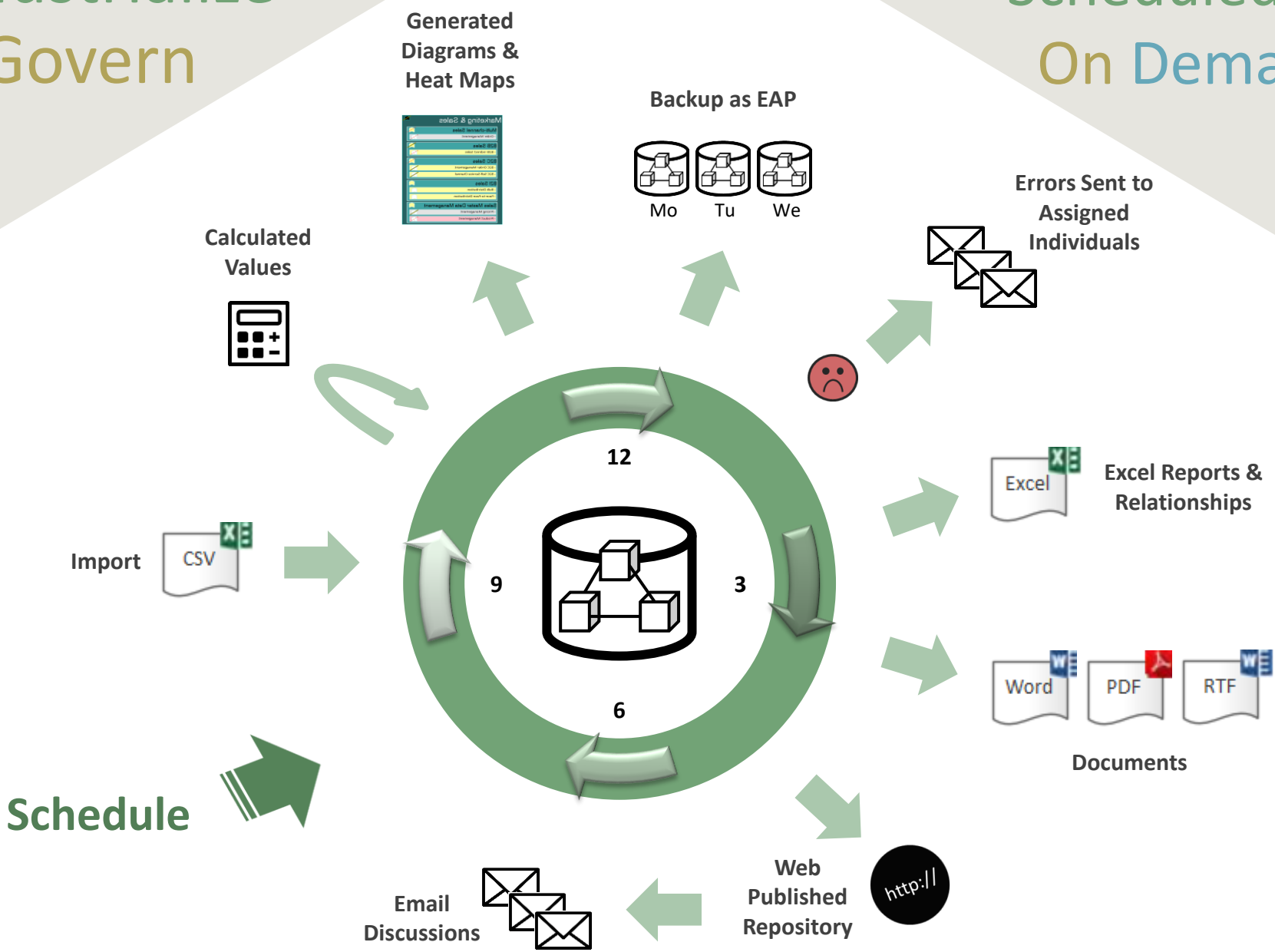
# Productivity features





# Industrialize & Govern

# Scheduled or On Demand



# Drive Changes to the Operating Platform

**Legend**

- Envisioning
- Architecture
- Planning

### Visible Enterprise Description

**Portfolios**

- Enterprise Functions
- Processes
- Information & Material
- People
- Equipment
- Applications
- Technologies

Costs (€)

Satisfaction (😊)

Measures (🌡️)

### Context (SWOT)

Internal Diagnoses

- Strengths
- Weaknesses
- Opportunities
- Threats

External Diagnoses

- Competition & Regulation
- Business & Tech. Trends

### Strategy Definition

Strategic Foundations

Strategic Plan

Operational Demands from Epics

concerns

Strategic concerns

### Portfolio of Demands

Principles (⚠️)

Standards (rules) (✅)

Demands (📄)

Business Cases (📊)

### Roadmaps

- Epics
- Capabilities
- Features
- User Stories

### Strategy Execution

### Release Plan

### Project Architecture

**Epic**

Architecture Vision

- Target Business Outcomes
- Target Capabilities & Features

**Proposed Architecture Solutions**

- Solution Architecture Blueprint
- Implementation Roadmap
- Alternative Solutions

**Solutions Weighing**

- Time Capacity Costs
- Detailed Business Case

**Solution Recommendation**

- Approved Solution in the updated
- transition and/or to be Architecture

**Implementation governance**

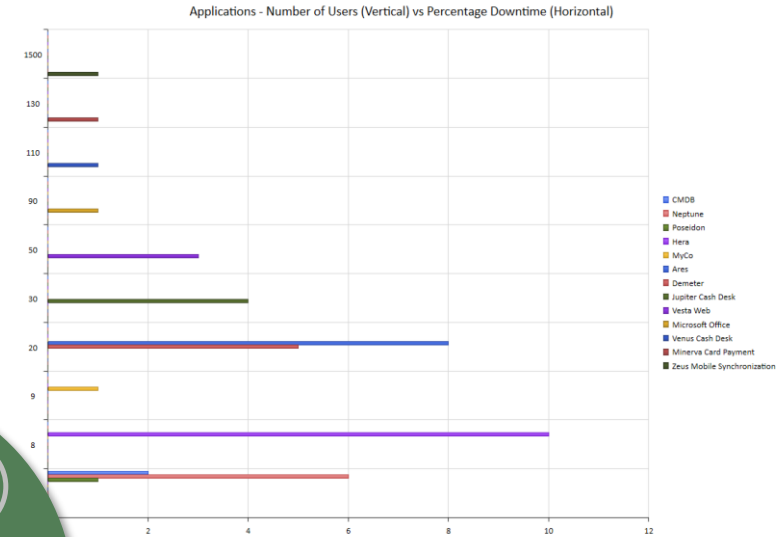
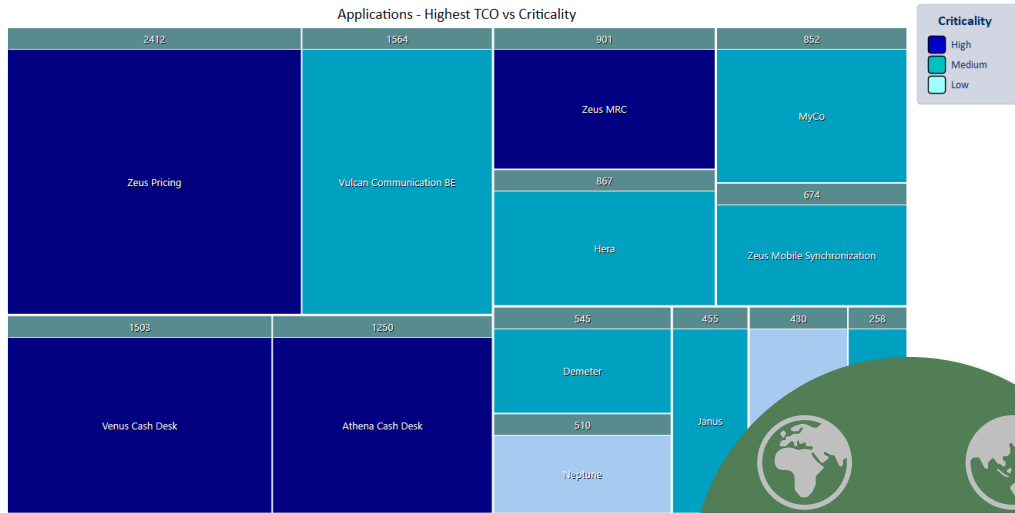
**Deployed Architecture Solution**

- Deployed Solution in the updated
- as-is Architecture

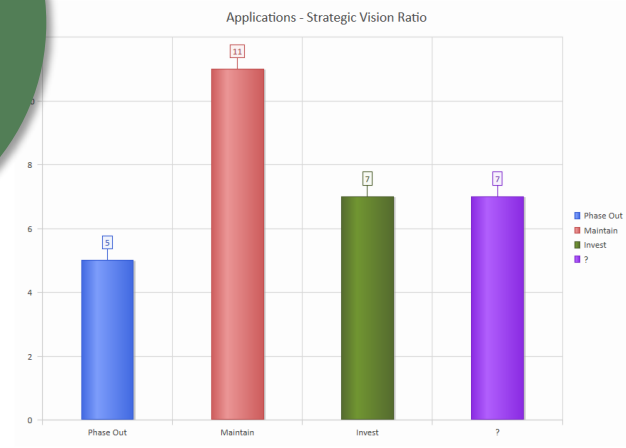
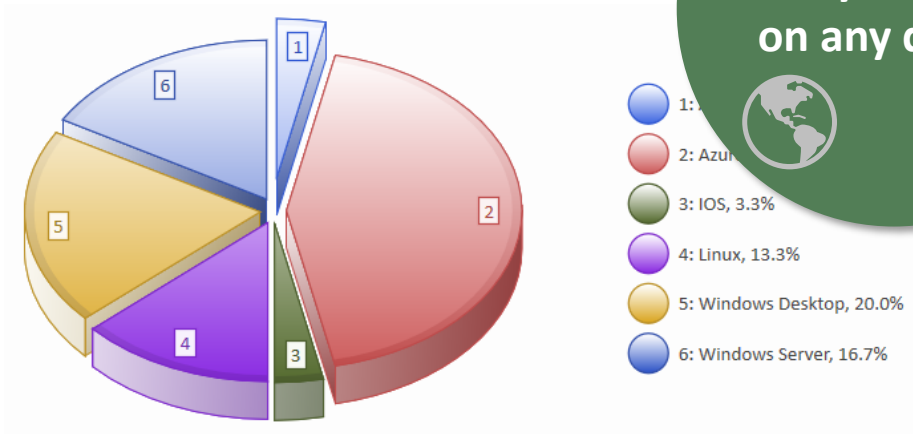
Architecture Solution Contents

Re-useable Portfolios Contents

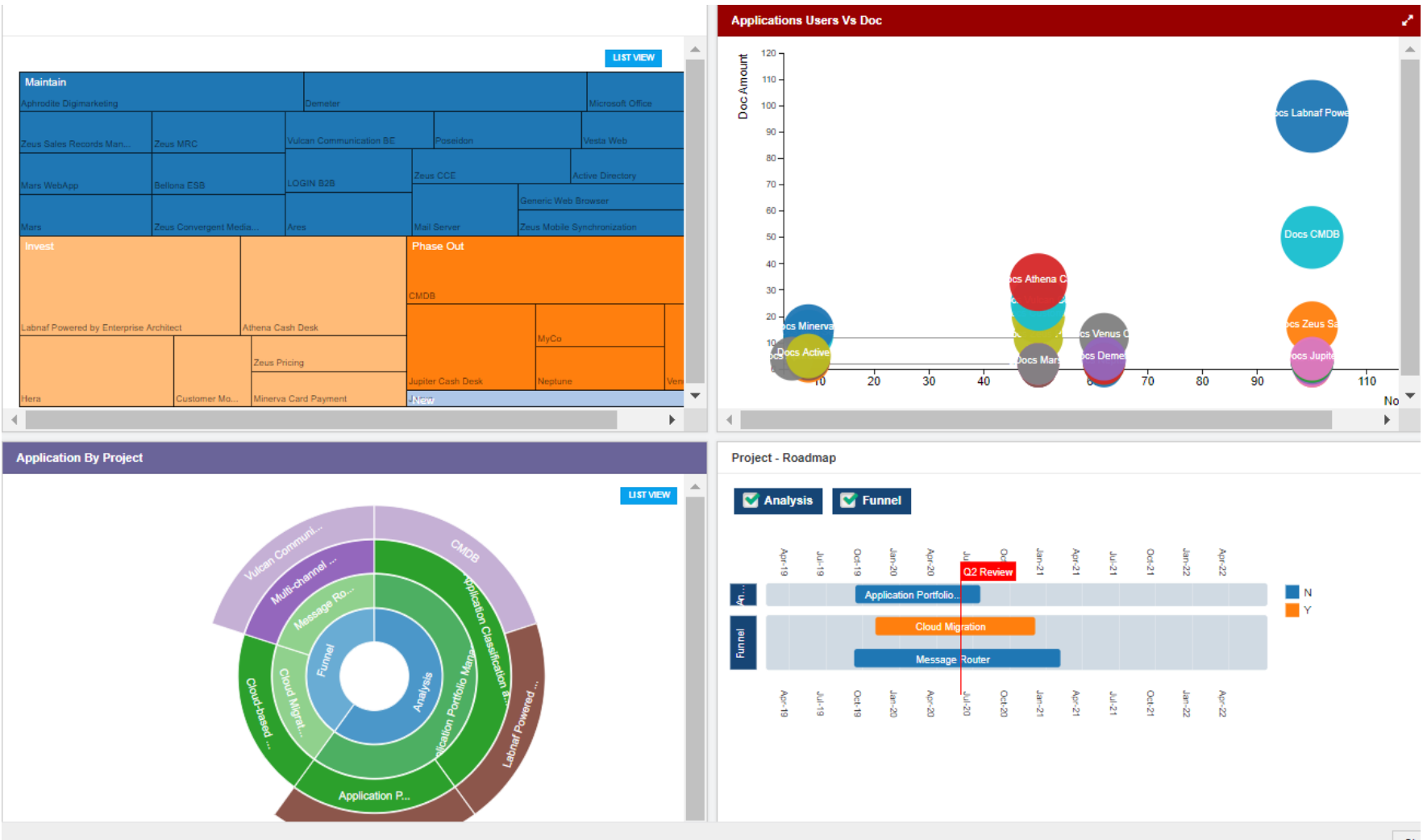
# Check Out your Real-time Dashboards and Take Decisions



Anywhere,  
on any device

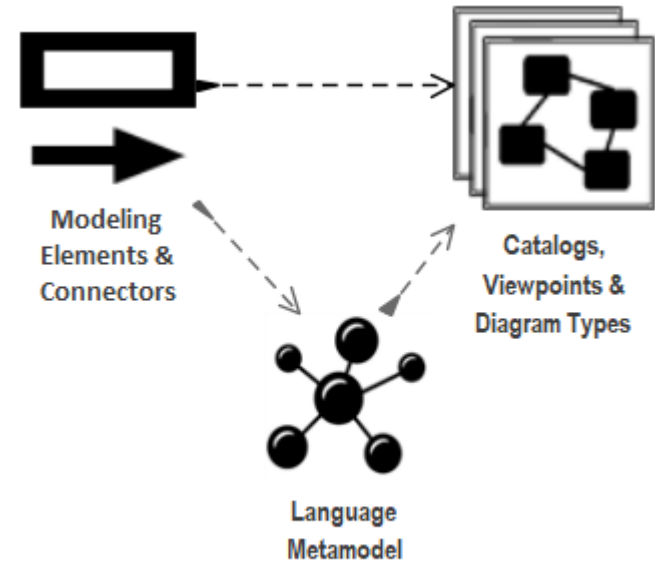


# Prolaborate Option: C-Level Enterprise Visualization and Navigation

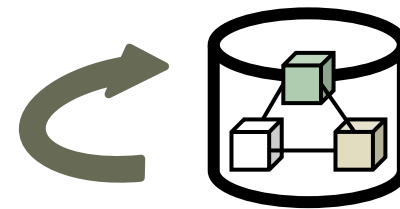


# Labnaf Customization Steps

1. Customize the language following your organization requirements



2. Adapt existing repository content





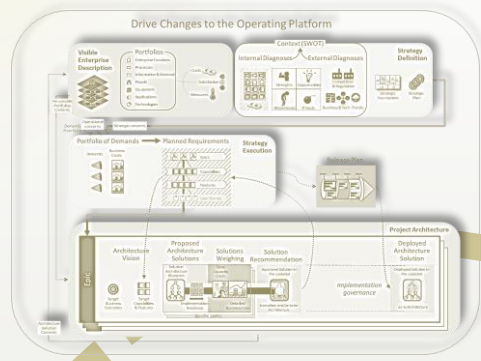
For the CIO

For the ARCHITECT *and the TEAM in general*

For the SERVICE PROVIDER

labnaf  
for the CIO

# Process



IoT  
GDPR  
Ecosystems  
AI  
Cloud Computing

# Merged Standards & Best Practices

IT4IT™ TOGAF® SAFe® Gartner EA Stage Planning  
ISO/IEC/IEEE 42010 ARCHIMATE®  
Systems Semantics  
PEST(EL) Porter's Five Forces Analysis Business Model Generation Strategy Map & Balanced Scorecard  
BPMN

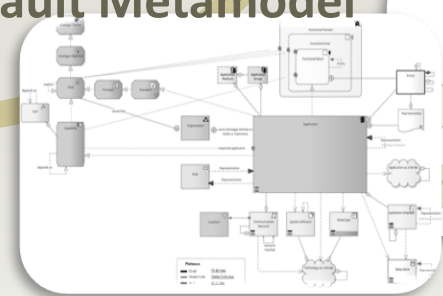
1



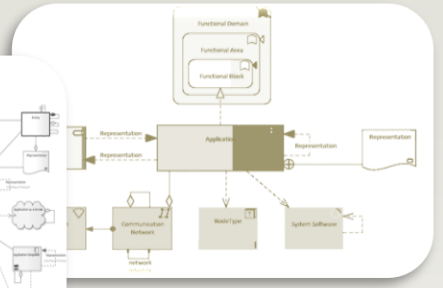
# Repository & Software



# Language, Default Metamodel



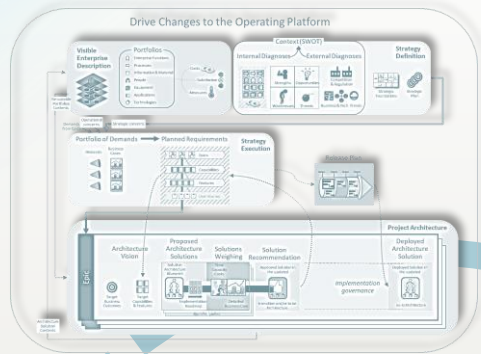
# Viewpoints



All in one

for the ARCHITECT & for the TEAM

### One Process



IoT

GDPR

Ecosystems

AI

Cloud Computing

### Merged Standards & Best Practices

IT4IT™ TOGAF® SAFe® Gartner EA Stage Planning

ISO/IEC/IEEE 42010

ARCHIMATE®

BPMN

Systems Semantics

PEST(EL)

Porter's Five Forces Analysis

Business Model Generation

Strategy Map & Balanced Scorecard

1

Business Stakeholder

CIO

Strategy

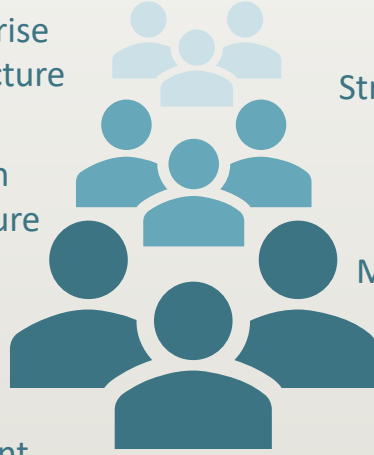
### One Repository & One Software



Enterprise Architecture

Solution Architecture

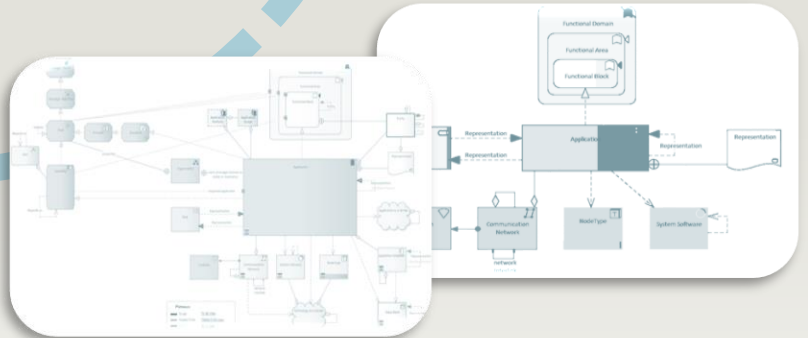
Demand Management



Program Management

Project Management

### One Language

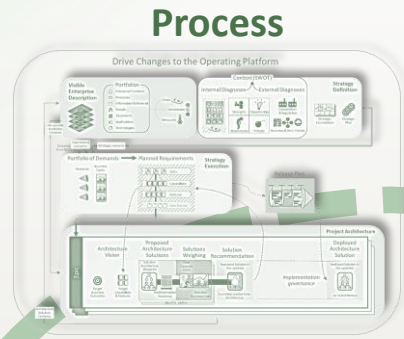


# One team



labnaf  
for the  
SERVICE  
PROVIDER

OFFER



Merged Standards & Best Practices

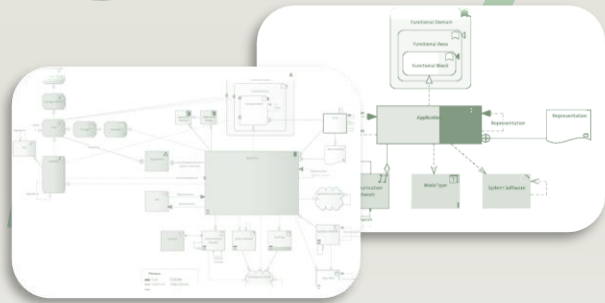
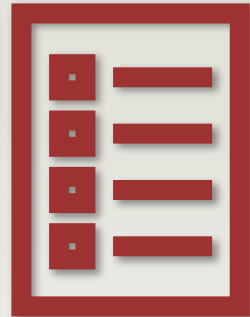
1



Repository & Software

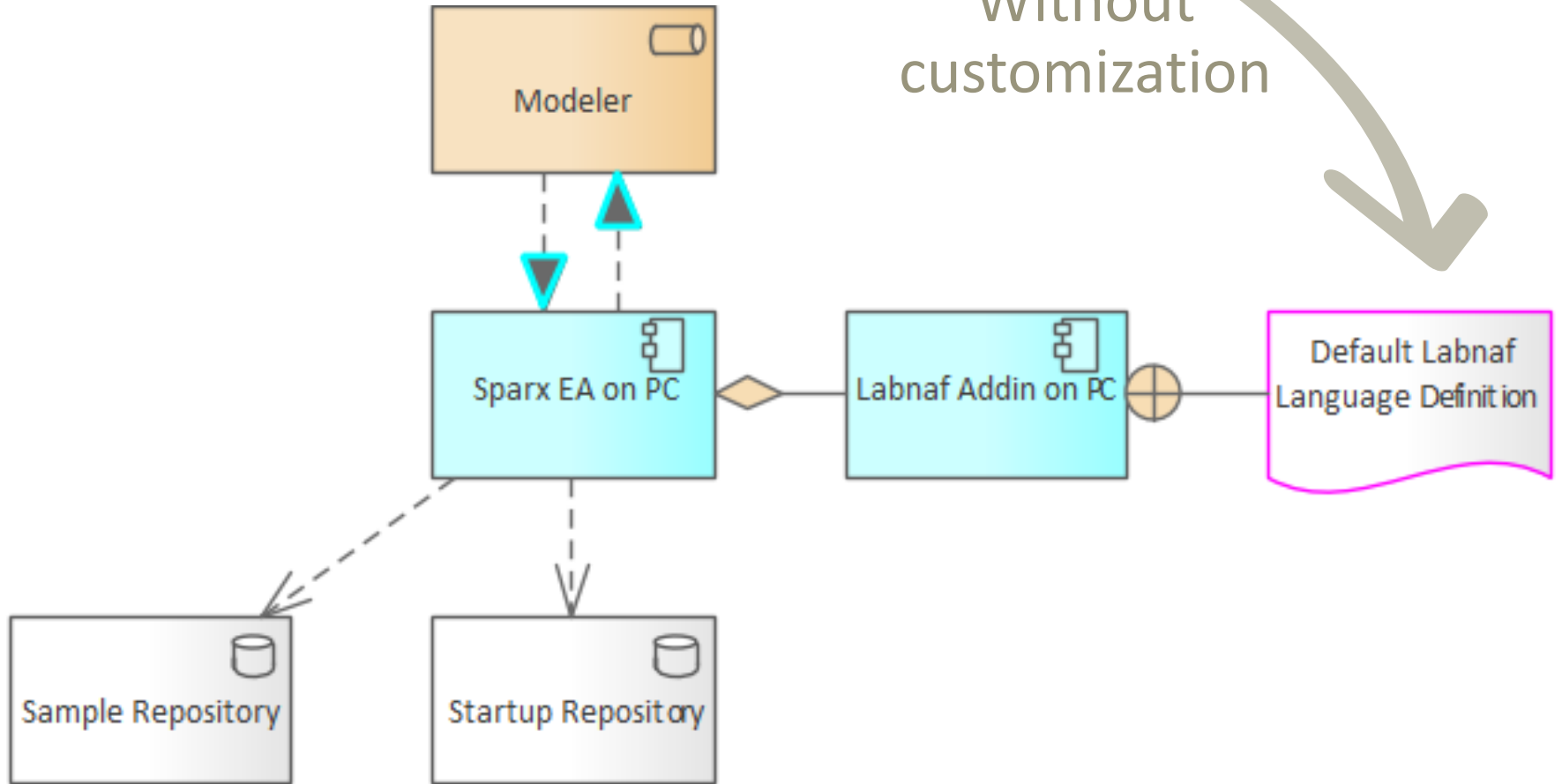


RFP



Language, Metamodel & Viewpoints

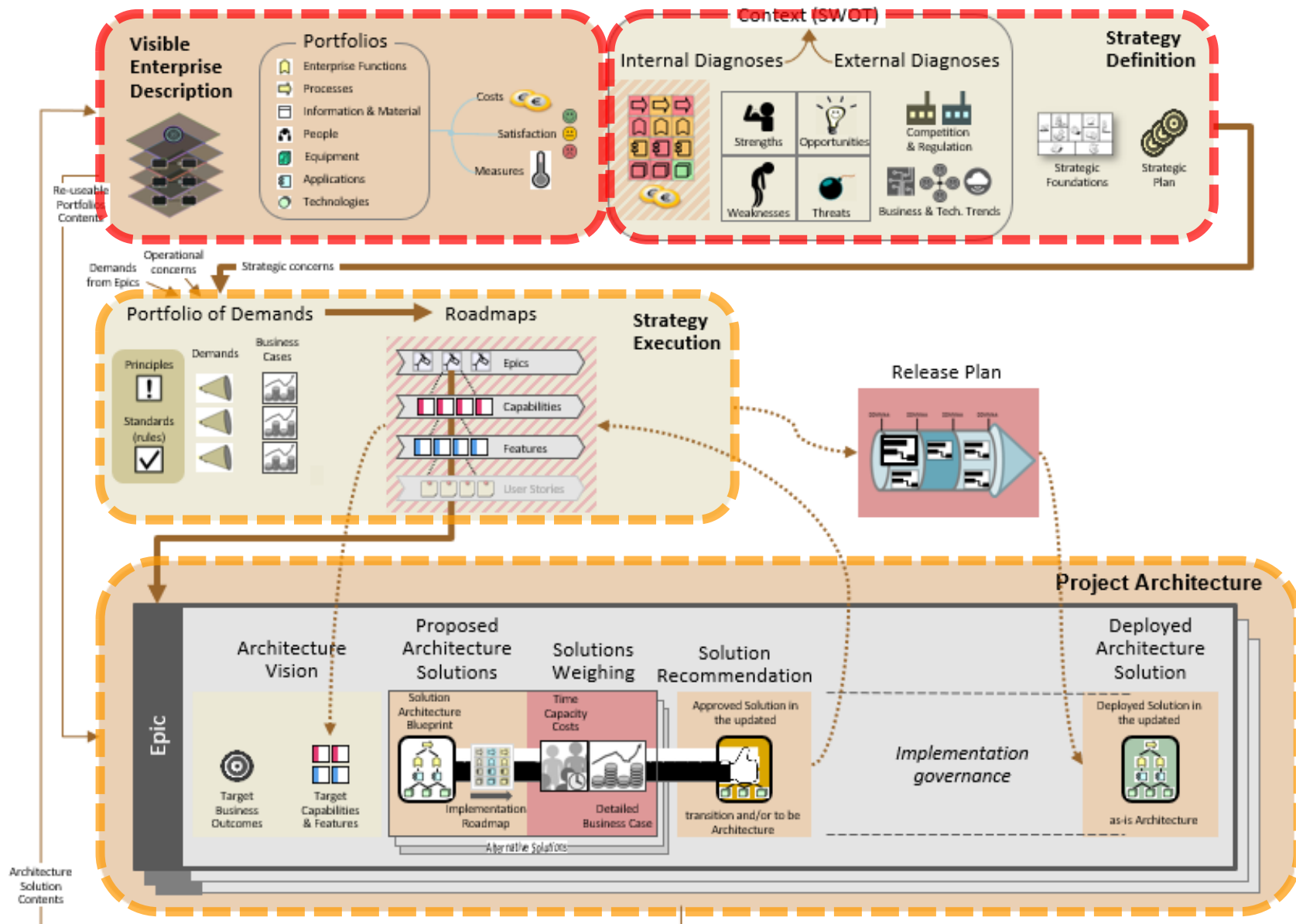
# Technical Setup



Without customization

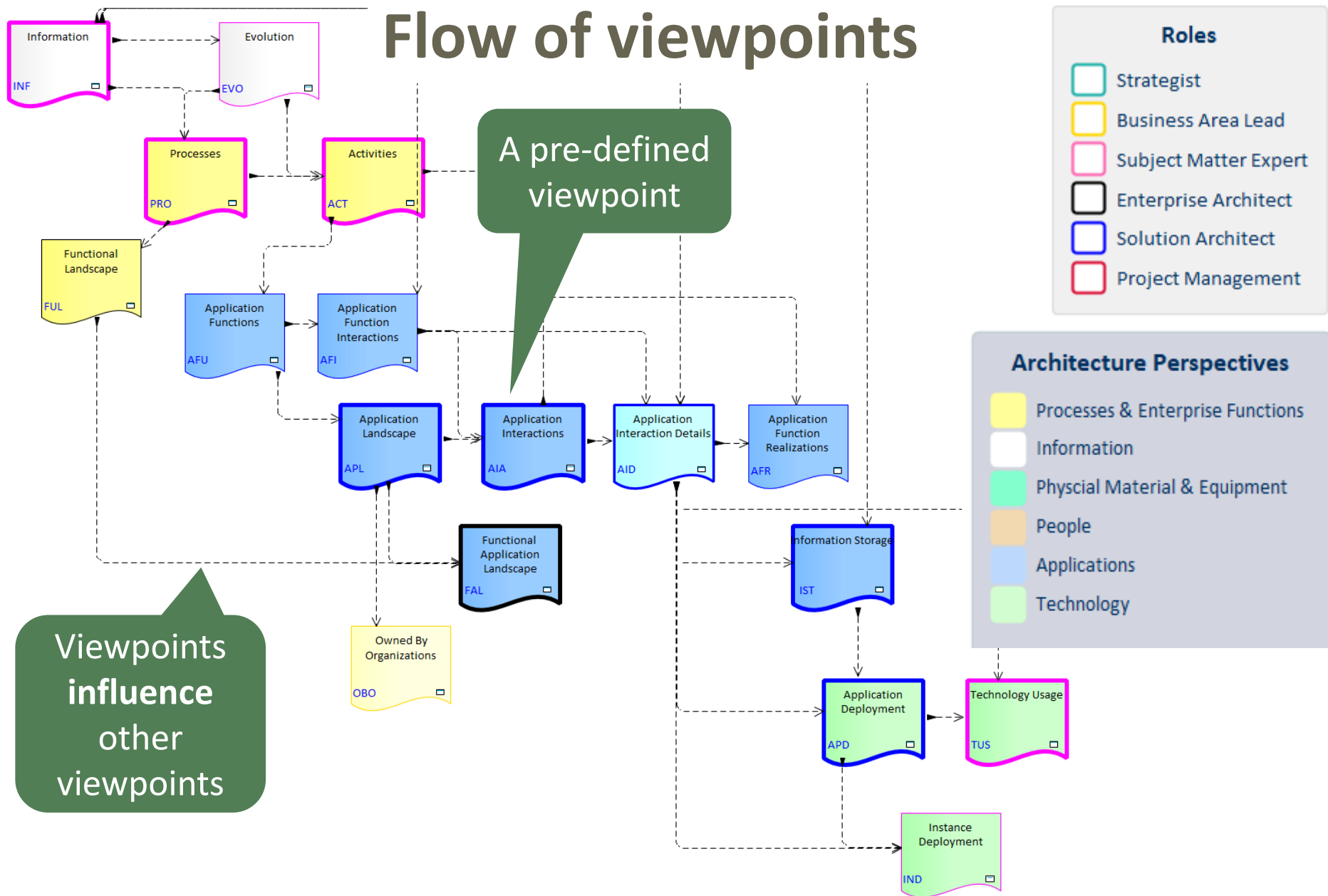
Used as reference

# What will be our Initial Focus?

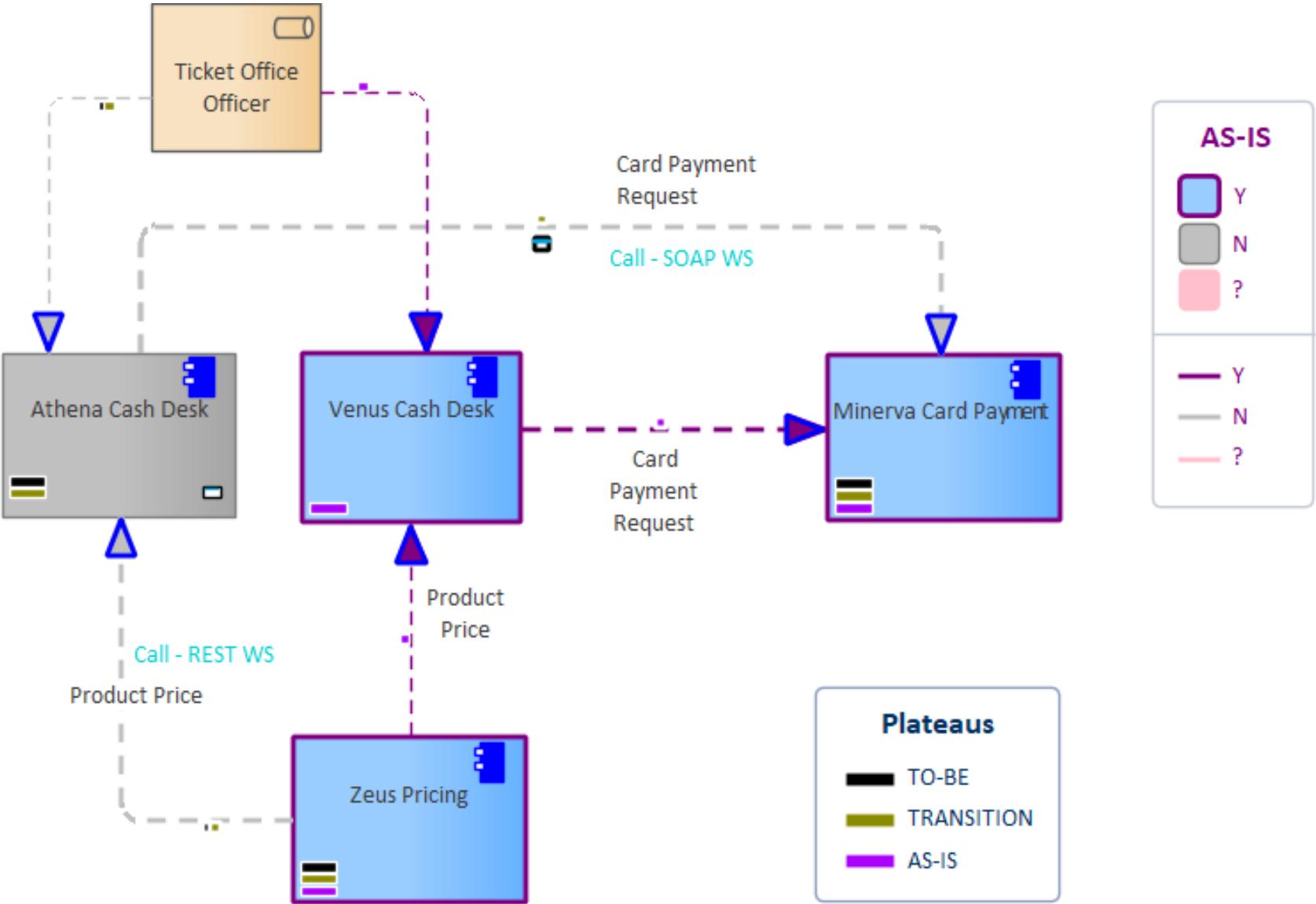


# Scenario: IT Architecture Solution Description

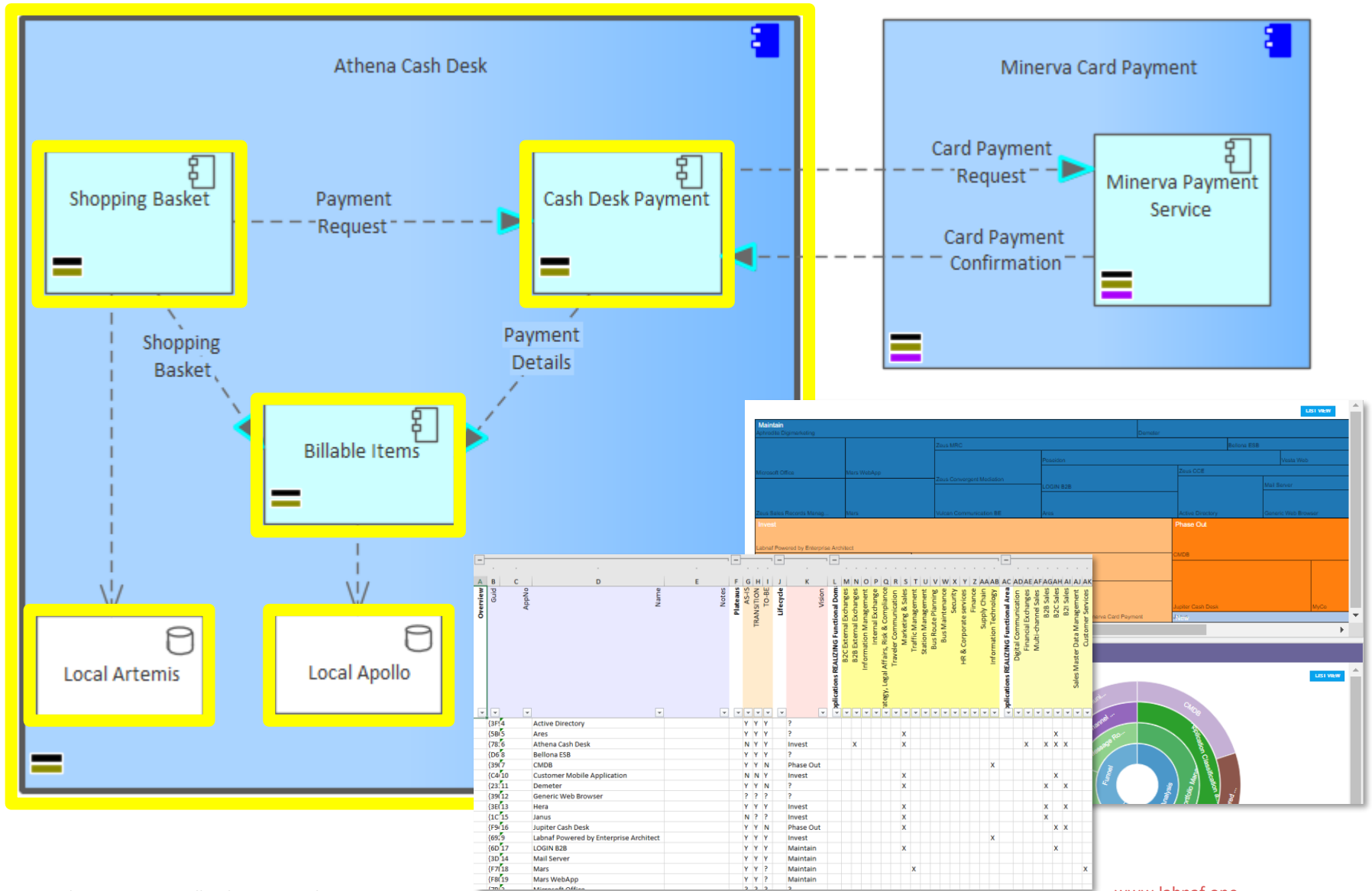
## Flow of viewpoints

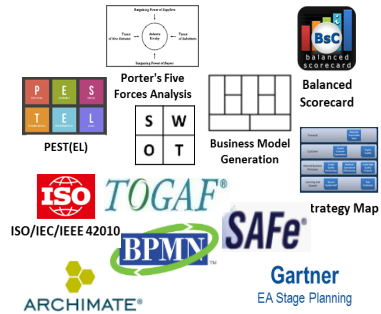


# Sample AS-IS “Application Interactions” View

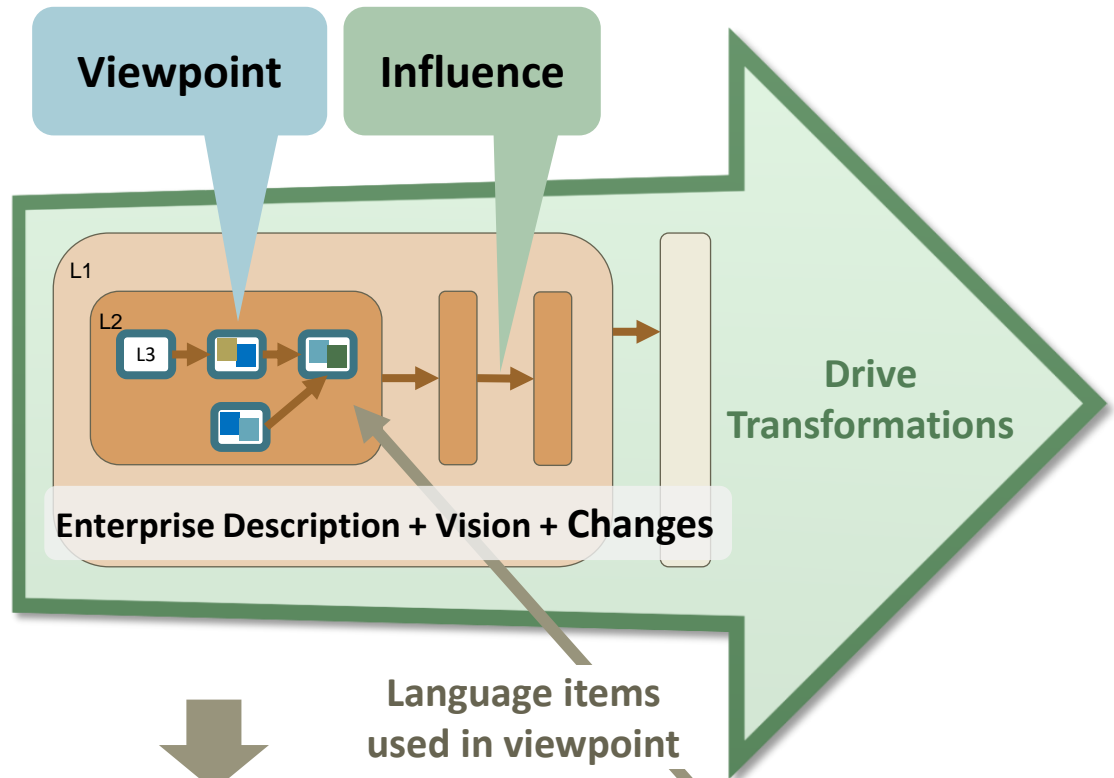


# Sample “Application Interaction Details”

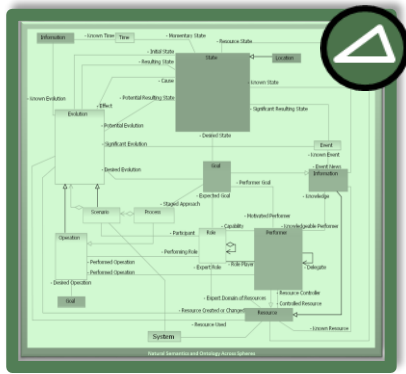




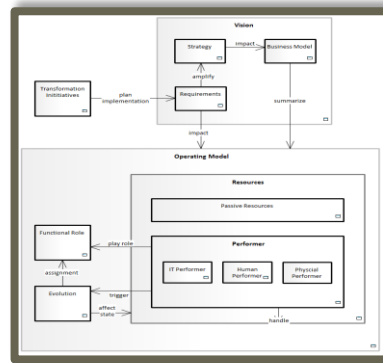
**Standards & Best Practices**



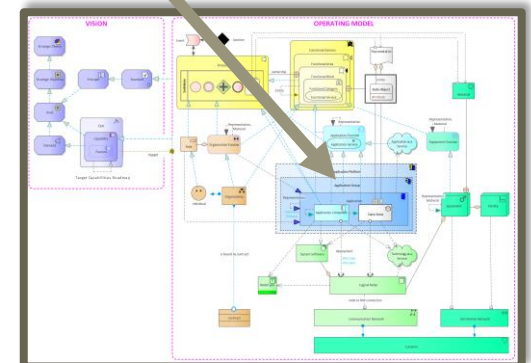
Language items used in viewpoint



**Systems Semantics**



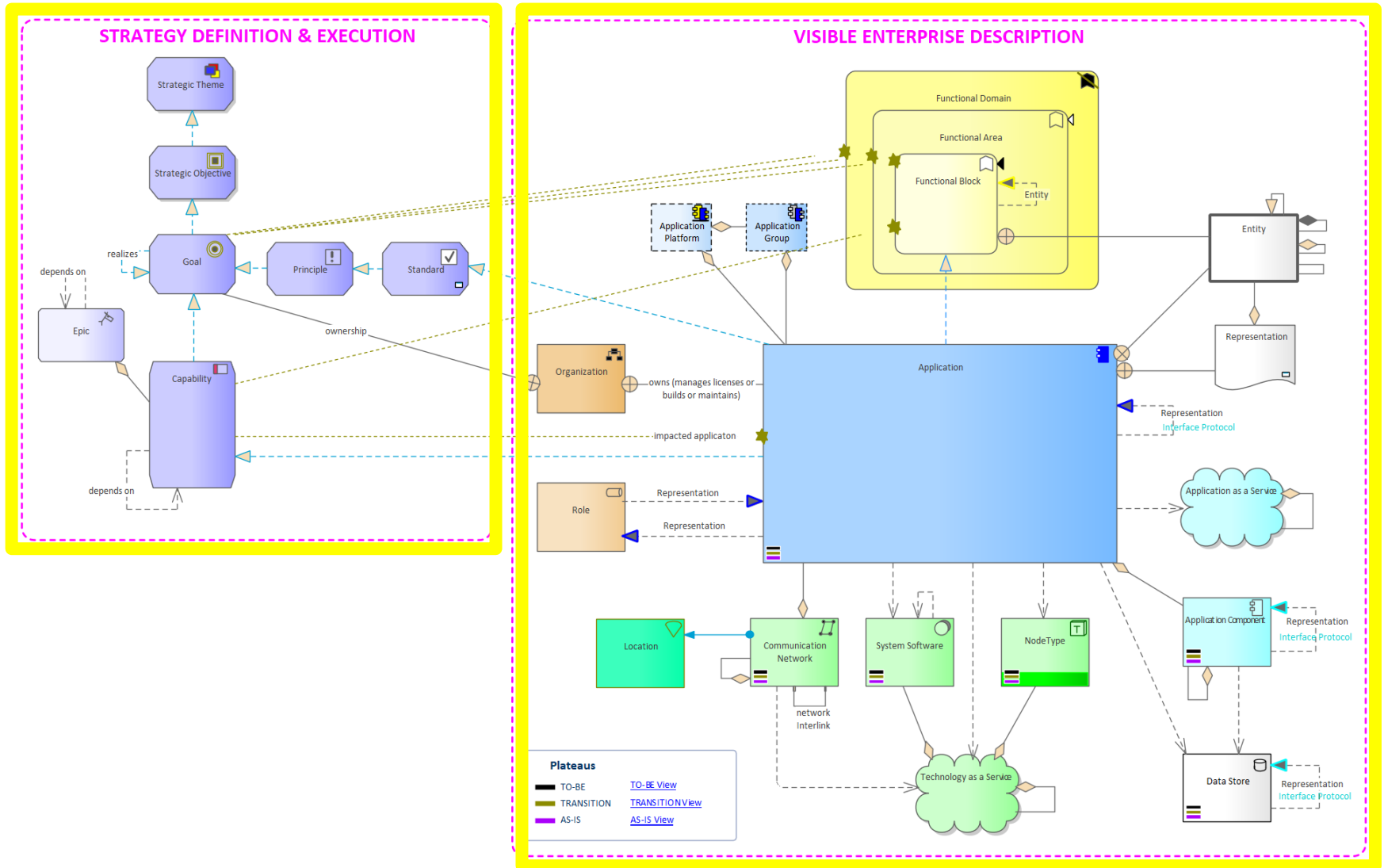
**Conceptual Metamodel**



**Language Metamodel**

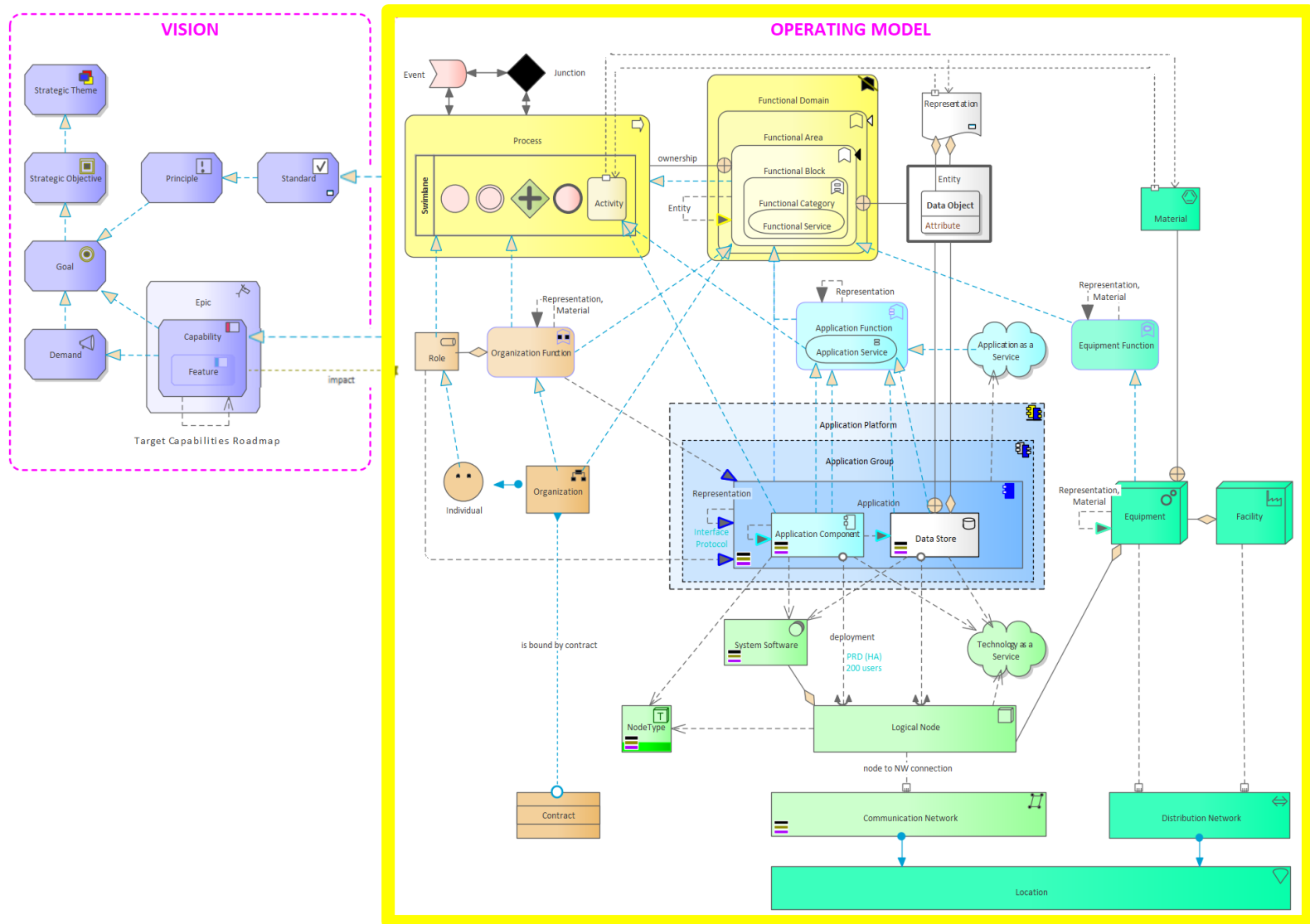
# Strategy & Enterprise Architecture

## Part of the Default Metamodel

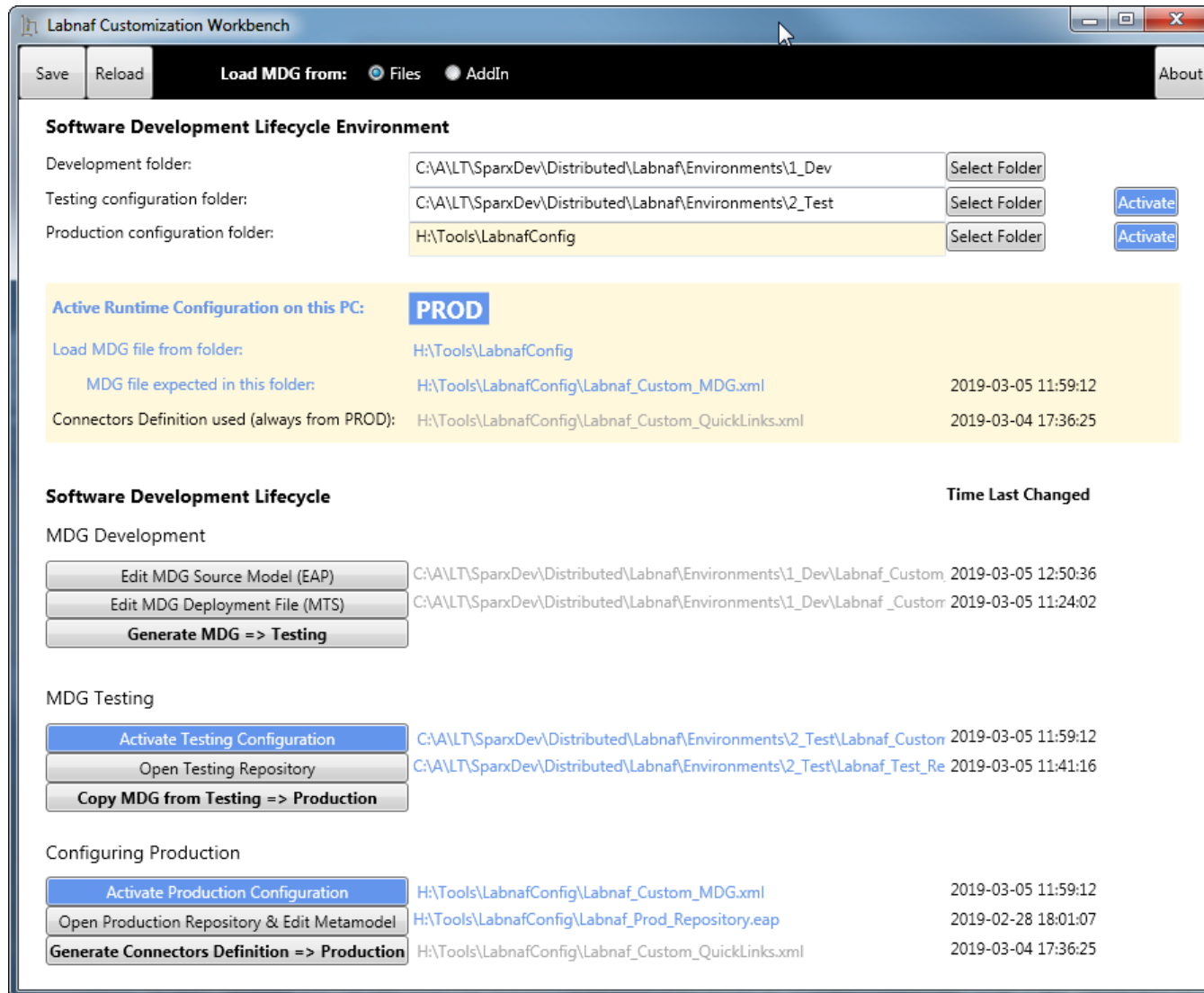




# (Subset of the) Solution Architecture Part of the Default Metamodel



# The Customization Workbench guides you throughout the **Language customization** lifecycle



The screenshot displays the Labnaf Customization Workbench interface. At the top, there are buttons for 'Save' and 'Reload', and a 'Load MDG from:' section with radio buttons for 'Files' (selected) and 'AddIn'. An 'About' button is in the top right corner.

**Software Development Lifecycle Environment**

Development folder: C:\ALT\SparxDev\Distributed\Labnaf\Environments\1\_Dev [Select Folder]  
Testing configuration folder: C:\ALT\SparxDev\Distributed\Labnaf\Environments\2\_Test [Select Folder] [Activate]  
Production configuration folder: H:\Tools\LabnafConfig [Select Folder] [Activate]

**Active Runtime Configuration on this PC: PROD**

Load MDG file from folder: H:\Tools\LabnafConfig  
MDG file expected in this folder: H:\Tools\LabnafConfig\Labnaf\_Custom\_MDG.xml 2019-03-05 11:59:12  
Connectors Definition used (always from PROD): H:\Tools\LabnafConfig\Labnaf\_Custom\_QuickLinks.xml 2019-03-04 17:36:25

**Software Development Lifecycle** Time Last Changed

MDG Development

Edit MDG Source Model (EAP)	C:\ALT\SparxDev\Distributed\Labnaf\Environments\1_Dev\Labnaf_Custom	2019-03-05 12:50:36
Edit MDG Deployment File (MTS)	C:\ALT\SparxDev\Distributed\Labnaf\Environments\1_Dev\Labnaf_Custom	2019-03-05 11:24:02
<b>Generate MDG =&gt; Testing</b>		

MDG Testing

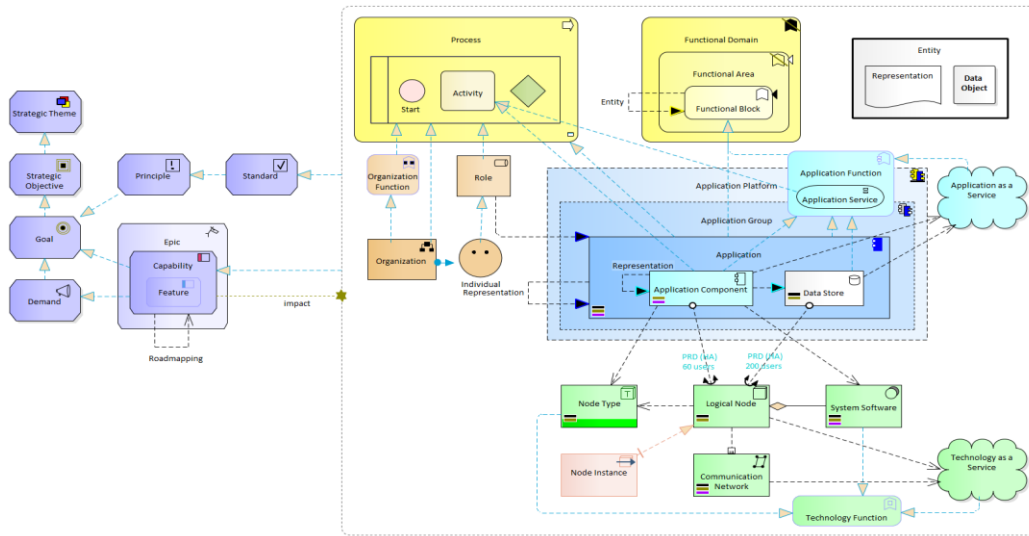
<b>Activate Testing Configuration</b>	C:\ALT\SparxDev\Distributed\Labnaf\Environments\2_Test\Labnaf_Custom	2019-03-05 11:59:12
Open Testing Repository	C:\ALT\SparxDev\Distributed\Labnaf\Environments\2_Test\Labnaf_Test_Re	2019-03-05 11:41:16
<b>Copy MDG from Testing =&gt; Production</b>		

Configuring Production

<b>Activate Production Configuration</b>	H:\Tools\LabnafConfig\Labnaf_Custom_MDG.xml	2019-03-05 11:59:12
Open Production Repository & Edit Metamodel	H:\Tools\LabnafConfig\Labnaf_Prod_Repository.eap	2019-02-28 18:01:07
<b>Generate Connectors Definition =&gt; Production</b>	H:\Tools\LabnafConfig\Labnaf_Custom_QuickLinks.xml	2019-03-04 17:36:25



# The Language Metamodel is used both for documentation & automatic model validation



Open Testing Repository  
Copy MDG from Testing => Production

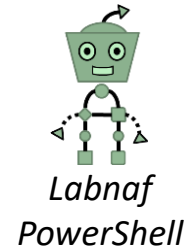
Configuring Production

Activate Production Configuration  
Open Production Repository & Edit Metamodel  
**Generate Connectors Definition => Production**

While Modeling

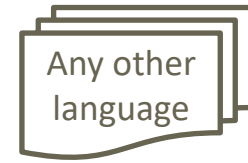
Existing Invalid Connectors

Prevent creation of invalid connectors

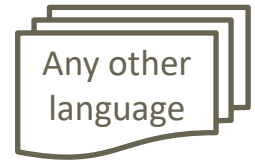


Send Error Emails to Relevant Recipients

# Target = Any Language

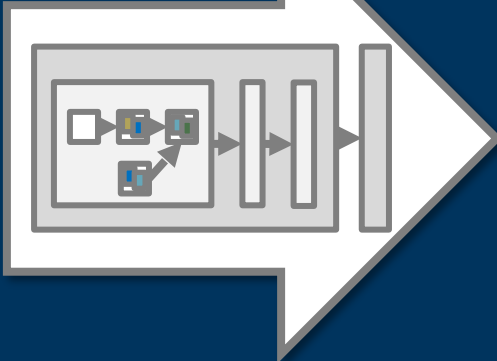


**Transform existing model content**

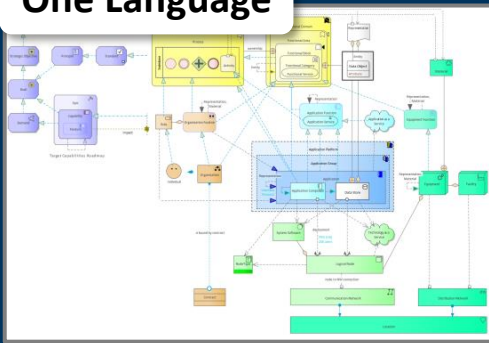


# Source = Any Language

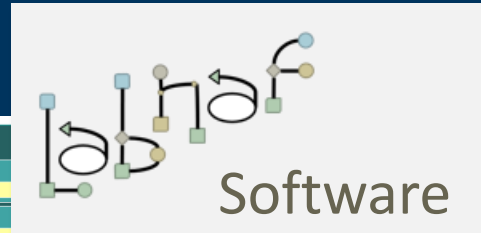
## One Transformation Process



## One Language

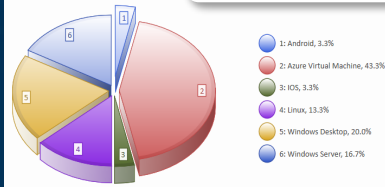


## One Shared Database



A screenshot of a software interface, likely a CRM or sales management system. The interface is divided into several sections: a top navigation bar, a main content area with various charts and tables, and a bottom section with a list of items. The interface is designed to be user-friendly and data-driven.

## One Software



Powered by

**ENTERPRISE ARCHITECT**  
SPARX SYSTEMS



## *For the CIO*

- Out of the box, Labnaf is all in one and ready to go

## *For the ARCHITECT and the TEAM in general*

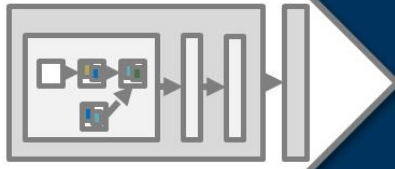
- Continuous collaboration with a single language

## *For the SERVICE PROVIDER*

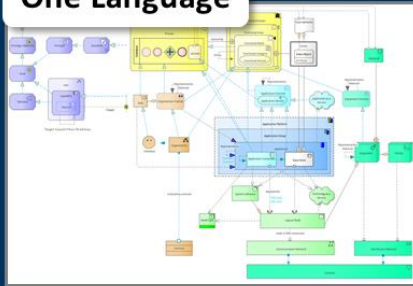
- Answer RFPs better, faster and cheaper



## One Transformation Process



## One Language



## One Shared Database



**Software**

Sales

- B2B Sales
  - B2B Indirect Sales
- B2C Sales
  - B2C Order Management
  - B2C Pricing Management
  - B2C Self-Service Channel
- B2I Sales
  - Bulk Distribution
  - Face-to-Face Distribution
- Sales Channel

Applications: 100 - Microsoft Exchange - 100 Server

OS Usage:

- 1: Android, 3.3%
- 2: Azure Virtual Machine, 43.3%
- 3: IOS, 3.3%
- 4: Linux, 13.3%
- 5: Windows Desktop, 20.0%
- 6: Windows Server, 16.7%

Powered by

**ENTERPRISE ARCHITECT**  
SPARX SYSTEMS





One Transformation Process

One Language

One Software

One Shared Database

labnaf Software

Powered by

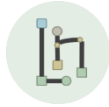
ENTERPRISE ARCHITECT SPARX

Demo...





Alain De Preter



Founder, Labnaf

[alain.depreter@Labnaf.one](mailto:alain.depreter@Labnaf.one)

[linkedin.com/in/alain-de-preter](https://linkedin.com/in/alain-de-preter)



Orsolya Nemeth

Consultant, Trainer and  
Speaker

[orsolya.nemeth@sparxservices.eu](mailto:orsolya.nemeth@sparxservices.eu)

[linkedin.com/in/orsolya-nemeth](https://linkedin.com/in/orsolya-nemeth)



Powered by



Distributed by



[www.sparxsystems.eu](http://www.sparxsystems.eu)